



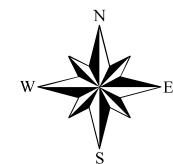
OFFICIAL PLAN AMENDMENT NUMBER 125

to the
GREY COUNTY OFFICIAL PLAN
Land Use Designations

SCHEDULE A

LEGEND

-  Lands Subject to Official Plan Amendment
-  Agricultural
-  Special Agriculture
-  Rural
-  Primary Settlement Area
-  Secondary Settlement Area
-  Tertiary Settlement Area
-  Inland Lakes and Shoreline
-  Recreational Resort Area
-  Space Extensive Commercial
-  Space Extensive Industrial
-  Hazard Lands
-  Provincially Significant Wetlands
-  Niagara Escarpment Boundary
-  Niagara Escarpment Development Control
-  Escarpment Recreation Area

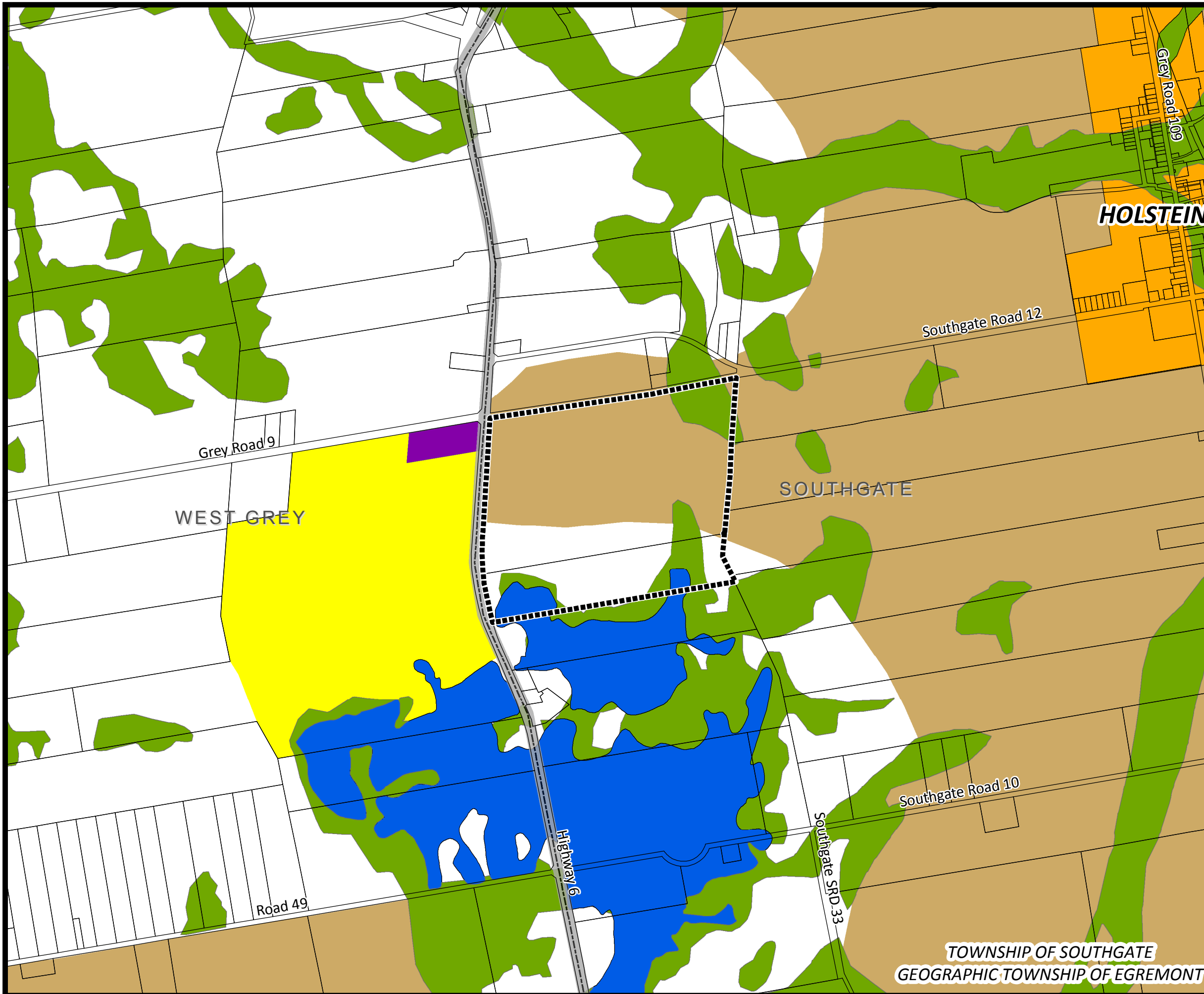


SCALE = 1:15,000

THE COUNTY OF GREY PLANNING AND DEVELOPMENT
2015 - CGB - 11X17 - OPA125_Egremont.MXD

DISCLAIMER: This map is illustrative only. Do not rely on it as being a precise indicator of routes, locations of features, nor as a guide to navigation. It has not been designed or certified for planning or surveying purposes. This map may contain cartographic errors or omissions.

SOURCE: Universal Transverse Mercator Grid Zone 17, North American Datum 1983. Base derived from the Ontario Digital Topographic Database, Scale 1:10 000.



TOWNSHIP OF SOUTHGATE
GEOGRAPHIC TOWNSHIP OF EGREMONT