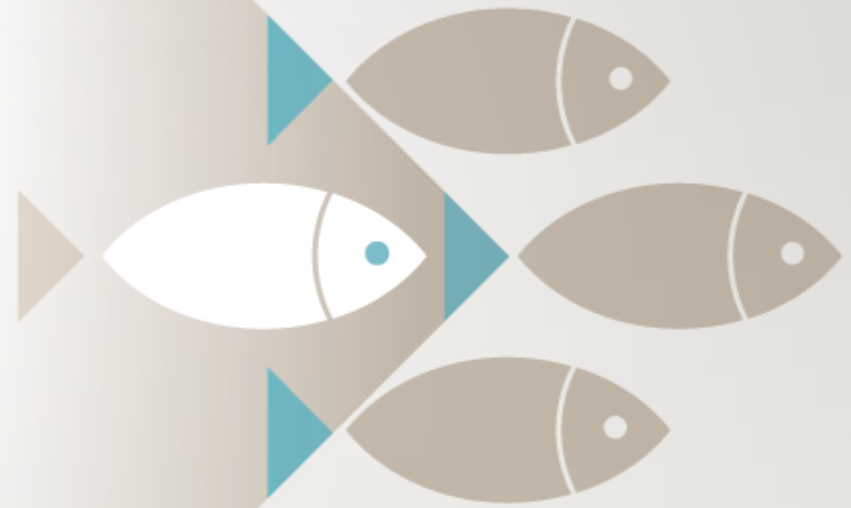


VIOLENCE
PREVENTION

GREY BRUCE
.com





Who We Are:

- Violence Against Women Community Coordinating Committee
- 40+ member organizations
- Founded in 1997



What We Do:

Encourage and support collaboration between agencies and organizations working to prevent and respond to gender-based violence.

Raise public awareness about gender-based violence and encourage community participation in violence prevention.



How We Work:

- Meetings of the whole four times a year
- Subcommittee work focused on:
 - Domestic and Sexual Violence
 - Anti-Human Trafficking
 - Elder Abuse
 - Collaborative Protocols
 - Public Outreach and Communication



Recent & On-Going Projects:

- Anti-Human Trafficking Community Forum
- Article Series: 16 Days of Activism (Nov-Dec)
and Sexual Assault Prevention Month (May)
- Art for Change Contest
- December 6 Vigil
- Elder Abuse Poster and Presentation Campaign
- Snapshot Project

Elder Abuse Resource Posters

- 11x17 and 8.5x11 posters available for distribution to community spaces and organizations.
- Elder Abuse information sessions can be booked until the end of March.
- Poster requests can be submitted by email.

Who do I call?
If a senior is experiencing violence?

| Anytime | | |
|--|--|--------------------------------|
| 911 | 911 | |
| Seniors Safety Line | 1-866-299-1011 | |
| Victim Services | 1-866-376-9852 | vsbgp.com |
| 211 | 211 | 211ontario.ca |
| The Women's Centre Grey Bruce | 1-800-265-3722 local - 519-371-1600 | thewomenscentre.org |
| Women's House Serving Bruce Grey | 1-800-265-3026 local - 519-396-9814 | whsbg.on.ca |
| During Business Hours | | |
| South East Grey Community Health Centre | 1-855-519-2220 local - 519-986-2222 | segchc.ca |
| Elder Abuse Prevention Ontario | 416-916-6728 | eapon.ca |
| Grey Bruce Community Legal Clinic | 1-877-832-1435 local - 519-370-2200 | gblegalclinic.com |
| Advocacy Centre for the Elderly | 1-855-598-2656 | advocacycentreelderly.org |
| Victim Info Support Line | 1-888-579-2888 | attorneygeneral.jus.gov.on.ca |
| YMCA Housing Services | 1-800-275-3711 local - 519-371-9230 | ymcaowensound.on.ca |
| M'Wikwedong Indigenous Friendship Centre | 519-371-1147 | mwikwedong.com |
| For Indigenous / First Nations Support | | |
| Hope for Wellness | 1-855-242-3310 | hopeforwellness.ca |
| Kabaeshiwim Place of Rest | 519-797-2521 | saugeenfirstnation.ca/services |
| Métis Nation of Ontario | 519-370-0632 | metisnation.org |

Created by Violence Prevention Grey Bruce with support from the Community Foundation Grey Bruce

Who do I call?
If a senior is experiencing violence?

| Anytime | | |
|--|--|--------------------------------|
| 911 | 911 | |
| Seniors Safety Line | 1-866-299-1011 | |
| Victim Services | 1-866-376-9852 | vsbgp.com |
| 211 | 211 | 211ontario.ca |
| The Women's Centre Grey Bruce | 1-800-265-3722 local - 519-371-1600 | thewomenscentre.org |
| Women's House Serving Bruce Grey | 1-800-265-3026 local - 519-396-9814 | whsbg.on.ca |
| During Business Hours | | |
| South East Grey Community Health Centre | 1-855-519-2220 local - 519-986-2222 | segchc.ca |
| Elder Abuse Prevention Ontario | 416-916-6728 | eapon.ca |
| Grey Bruce Community Legal Clinic | 1-877-832-1435 local - 519-370-2200 | gblegalclinic.com |
| Advocacy Centre for the Elderly | 1-855-598-2656 | advocacycentreelderly.org |
| Victim Info Support Line | 1-888-579-2888 | attorneygeneral.jus.gov.on.ca |
| YMCA Housing Services | 1-800-275-3711 local - 519-371-9230 | ymcaowensound.on.ca |
| M'Wikwedong Indigenous Friendship Centre | 519-371-1147 | mwikwedong.com |
| For Indigenous / First Nations Support | | |
| Hope for Wellness | 1-855-242-3310 | hopeforwellness.ca |
| Kabaeshiwim Place of Rest | 519-797-2521 | saugeenfirstnation.ca/services |
| Métis Nation of Ontario | 519-370-0632 | metisnation.org |

Created by Violence Prevention Grey Bruce with support from the Community Foundation Grey Bruce

Snapshot 2019

STATISTICS APRIL 1 2018 – MARCH 31 2019

Snapshot 2020

STATISTICS APRIL 1 2019 – MARCH 31 2020



Snapshot 2019 Snapshot 2020

STATISTICS APRIL 1 2018 – MARCH 31 2019

STATISTICS APRIL 1 2019 – MARCH 31 2020

POLICING & JUSTICE



| | |
|--|-----|
| Domestic violence incidents reported to police | 894 |
| Sexual violence incidents reported to police | 212 |
| Human trafficking incidents reported to police | 12 |
| Domestic homicides/femicides | 0 |

CRISIS & HELPLINES



| | |
|---|-------|
| VAW shelter crisis / helpline calls <i>(includes domestic and sexual violence)</i> | 9,682 |
|---|-------|

SAFETY & SUPPORTS



| | |
|--|-----|
| Women, children in shelter | 241 |
| Women turned away from shelter due to shortage of beds | 190 |
| VAW related calls Victim Services have attended | |
| Domestic violence | 287 |
| Sexual assault | 104 |
| HT related calls Victim Services have attended | 8 |
| DV/SV/HT counselling through VAW organizations | 923 |
| Partner Assault Response Program completions | |
| Men | 111 |
| Women | 11 |

EMERGENCY MEDICAL CARE



Gray Bruce Health Services

| | |
|---------------------------|----|
| Acute sexual assaults | 19 |
| Domestic violence | 8 |
| Pediatric sexual assaults | 3 |

CHILD WELFARE



| | |
|--|-------|
| % of cases opened for children who were exposed to domestic violence | 19% |
| Indigenous children in care <i>(% of total cases)</i> | 12.6% |

HOUSING



| | |
|---------------------------------|-------|
| Waitlist for subsidized housing | 1,494 |
|---------------------------------|-------|

EMPLOYMENT



| | |
|---------------------------------|-------|
| Unemployment rate February 2019 | 5.6% |
| People on Ontario Works (Cases) | 1,829 |
| People receiving ODSP | 5,087 |

Legend:

DV: Domestic Violence
SV: Sexual Violence
HT: Human Trafficking
ODSP: Ontario Disability Support Program
VAW: Violence Against Women

POLICING & JUSTICE



| | |
|--|-----|
| Domestic violence incidents reported to police | 791 |
| Sexual violence incidents reported to police | 237 |
| Human trafficking incidents reported to police | 13 |
| Domestic homicides/femicides | 0 |

CRISIS & HELPLINES



| | |
|---|--------|
| VAW shelter crisis / helpline calls <i>(includes domestic and sexual violence)</i> | 11,836 |
|---|--------|

SAFETY & SUPPORTS



| | |
|--|-------|
| Women, children in shelter | 313 |
| Women turned away from shelter due to shortage of beds | 161 |
| VAW related calls Victim Services have attended | |
| Domestic violence | 341 |
| Sexual assault | 141 |
| HT related calls Victim Services have attended | 17 |
| DV/SV/HT counselling through VAW organizations | 1,065 |
| Partner Assault Response Program completions | |
| Men | 100 |
| Women | 28 |

EMERGENCY MEDICAL CARE



Gray Bruce Health Services

| | |
|---------------------------|----|
| Acute sexual assaults | 30 |
| Domestic violence | 9 |
| Pediatric sexual assaults | 8 |

CHILD WELFARE



| | |
|--|-----|
| % of cases opened for children who were exposed to domestic violence | 19% |
| Indigenous children in care <i>(% of total cases)</i> | 18% |

HOUSING



| | |
|---------------------------------|-------|
| Waitlist for subsidized housing | 1,679 |
|---------------------------------|-------|

EMPLOYMENT



| | |
|---------------------------------|-------|
| Unemployment rate February 2020 | 4.9% |
| People on Ontario Works (Cases) | 1,940 |
| People receiving ODSP | 5,154 |

Legend:

DV: Domestic Violence
SV: Sexual Violence
HT: Human Trafficking
ODSP: Ontario Disability Support Program
VAW: Violence Against Women

Gender-Based Violence & COVID-19

- Stay at home orders and economic stress increase risks of intimate partner violence
- Women are disproportionately at risk in low-wage, essential front line work from food service to long term and health care settings.
She-cession: women are dropping out from the economy more quickly and re-entering more slowly than men.
- Decreases in access to informal and formal social supports impacts:
 - Ability to work, mental health,
 - Opportunities to disclose intimate partner or sexual violence

How Municipalities Can Support Violence Prevention

- Consider municipal **policy decisions** through the lens of social determinants of health and gender-based analysis:
 - reducing vulnerability and marginalization reduces violence
- As **employers**: supporting staff and committee member education about gender based violence and ensuring workplaces are supportive of folks experiencing violence
- **Advocacy**: support projects that improve equity, education, access to affordable housing, transportation, as well as proactive and preventative social programming.



Questions?

Learn More About Violence Prevention Grey Bruce

- www.violencepreventiongreybruce.com
- Facebook: www.facebook.com/violencepreventiongreybruce
- Email: coordinator@violencepreventiongreybruce.com