

Report TR-TAPS-08-16

To: Chair and Members of the Transportation and Public Safety Committee
From: M.J. Kelly, Director of Transportation Services
Meeting Date: December 17, 2015
Subject: Transfer Sarawak-Keppel Bridge to the Township of Georgian Bluffs
Status: Recommendation adopted as **amended** per Resolution TAPS11-16 by adding “at the County’s cost”; Endorsed by County Council January 5, 2016 per Resolution CC08-16;

Recommendation(s)

WHEREAS the Township of Georgian Bluffs has requested the County of Grey to transfer the Sarawak-Keppel Townline Bridge to the Municipality;

AND WHEREAS the County has the authority to transfer the bridge to the Township as per Section 52 of the Municipal Act 2001;

NOW THEREFORE BE IT RESOLVED THAT Report TR-TAPS-08-16 regarding the transfer of the Sarawak-Keppel Townline Bridge to the Township of Georgian Bluffs be received;

AND THAT Grey County transfers ownership of the Sarawak-Keppel Townline Bridge (Structure Number 900003) to the Township of Georgian Bluffs in an “as is” condition, with the agreement that the County will remove the bridge railings in 2016.

Background

In 1920, a concrete cast-in-place bridge was built on the Sarawak-Keppel Townline approximately 10 metres north of Church Street. The structure is 10 metres long and 6.7 metres wide.

This is a County bridge on a local road. The County has ownership of the structure because it is on the former boundary line of the Townships of Keppel and Sarawak.

In 2015, the structure was assessed by a Structural Engineer retained by Grey County. In September 2015, the Structural Engineer recommended that the bridge be

immediately closed to vehicular traffic for structural reasons. In early October 2015, the bridge was physically closed.

The closure of the bridge does not land lock any property, as there is access from the north; however, the bridge was a link in the local all-terrain vehicle and snowmobile trails.

Concern has been raised by the all-terrain vehicle and snowmobile clubs regarding access, as this bridge was a part of their trails. There is a parallel road to the east of the Sarawak-Keppel Townline; however this is a much more residential road than the current route and not a preferred option.

The Township of Georgian Bluffs has requested that the County transfer the closed bridge to the Municipality now and that the County remove the bridge railing in the spring of 2016. Completing the transfer will allow the Township to work with the all-terrain vehicle and snowmobile clubs to provide an alternative bridge. The County bridge crew is able to schedule the railing project in 2016.

In accordance with Section 52 of the Municipal Act 2001, the County may transfer the bridge to the local municipality.

Financial / Staffing / Legal / Information Technology

Considerations

The removal of the bridge railings can be undertaken by County staff and accommodated within the Transportation Services budget. Some incidental legal costs will be incurred to transfer the structure.

Link to Strategic Goals / Priorities

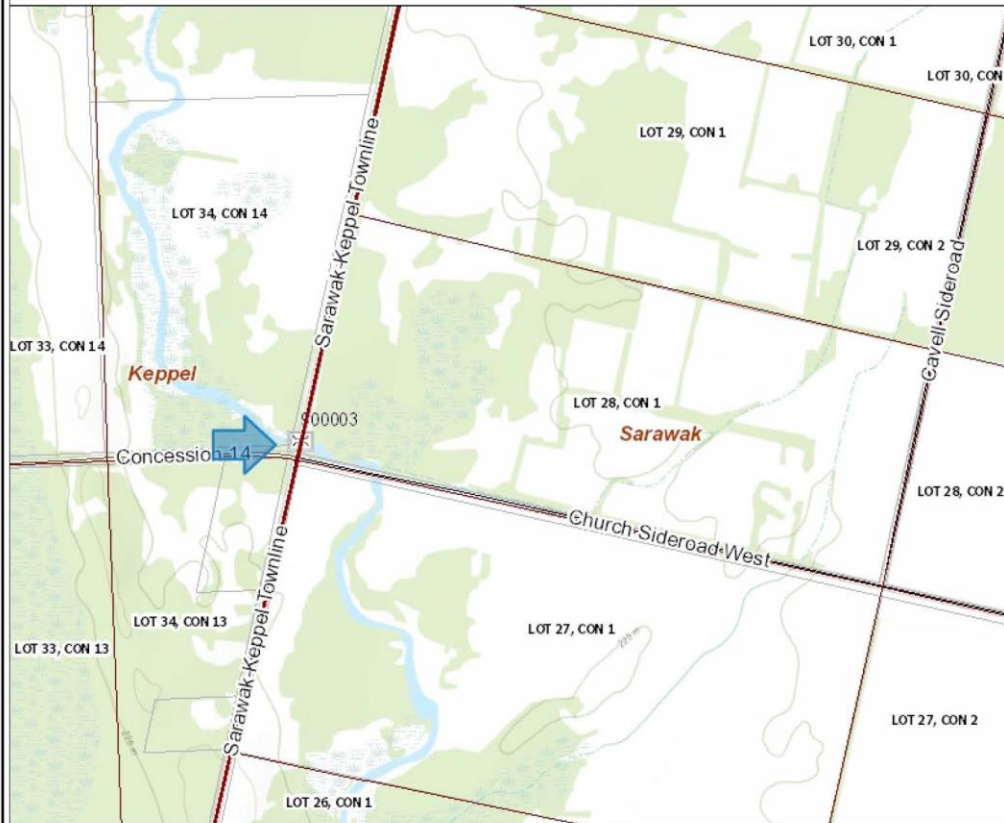
4.2 Promote effective coordination and communication between and amongst the County of Grey and its nine lower-tier municipalities.

Attachments

Sarawak-Keppel Townline Bridge Location Map

Respectfully submitted by,

M.J. Kelly
Director of Transportation Services

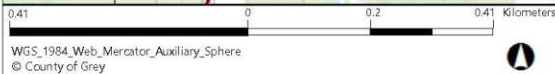


Legend

- Lots & Concessions
- Geographic Townships
- Parcels
- Roads 125k**
- Provincial Highway
- County Road
- Township Road
- Seasonal Road
- Bridge
- Culverts - Not Inspected
- Culverts - Inspected
- Poor
- Fair
- Good
- Culverts - Capital Assets**
- Capital Asset (> 3m)
- Not Capital Asset (≤ 3m)
- County Owned Roads
- Citations

Notes

Structure Number 900003



WGS_1984_Web_Mercator_Auxiliary_Sphere
© County of Grey



This map is a user generated static output from an Internet mapping site and is for reference only. Data layers that appear on this map may or may not be accurate, current, or otherwise reliable.
Printed: December 4, 2015 THIS MAP IS NOT TO BE USED FOR NAVIGATION