



# Ontario Works Participant Profile December 31, 2013

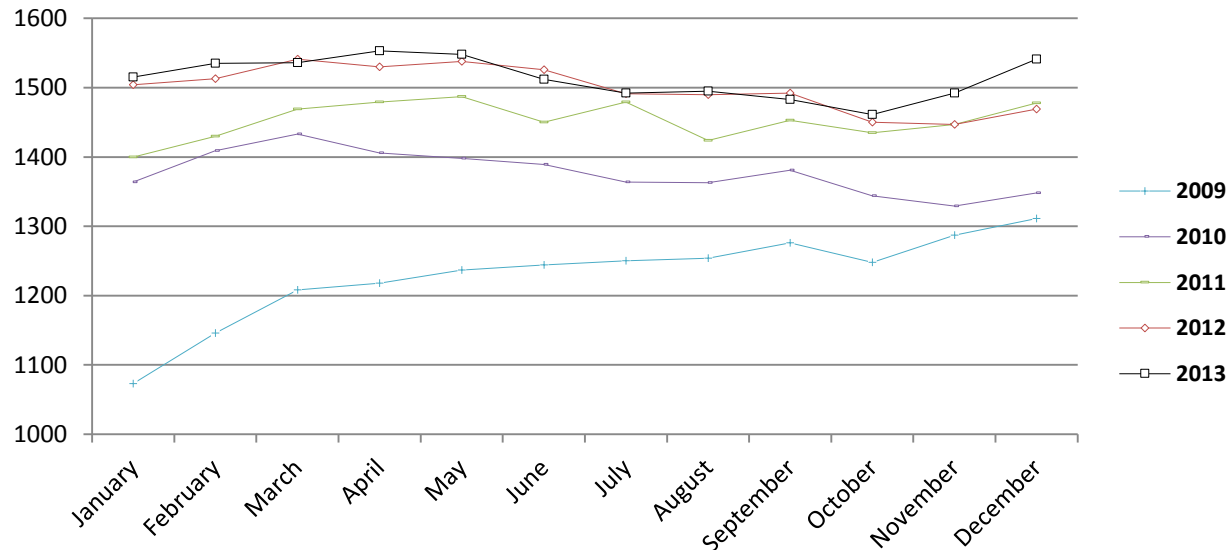


# Summary Profile of Households on Grey County's Caseload as of December 31, 2013

- Average time on Assistance is 24.6 months
- 61 % of Clients are Single Individuals
- 31 % are Sole Support Parents
- 50 % of the Children on Assistance are under the age of 7

# Ontario Works Caseload from 2009-2013

Ontario Works Caseload



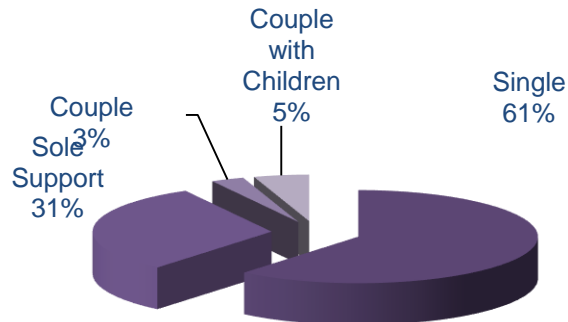
Year	2008	2009	2010	2011	2012	2013
Average	941	1229	1377	1453	1499	1514
Increase over previous year	10.11%	30.65%	12.04%	5.46%	3.21%	0.96%
Average # of Months on Assistance		17	20.4	21.4	22.6	24.6

**Caseloads in 2013 closely mirrored 2012 caseload with the exception of a higher spike at the end of 2013. Caseload sizes are still below the peak of 2235 seen in February 1992. The length of time on assistance continued to increase in 2013.**

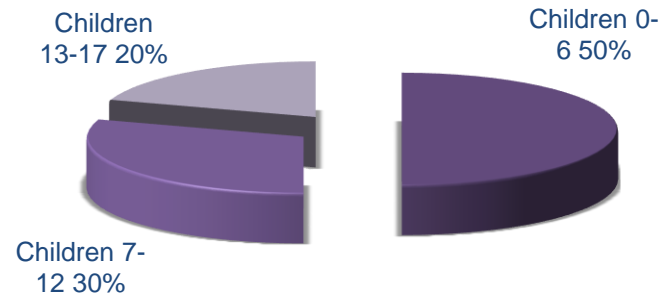
Data taken from Form 5 Report.

# Caseload Composition in 2013

## Average Caseload Composition for 2013



## Average Age of Children on Assistance in 2013

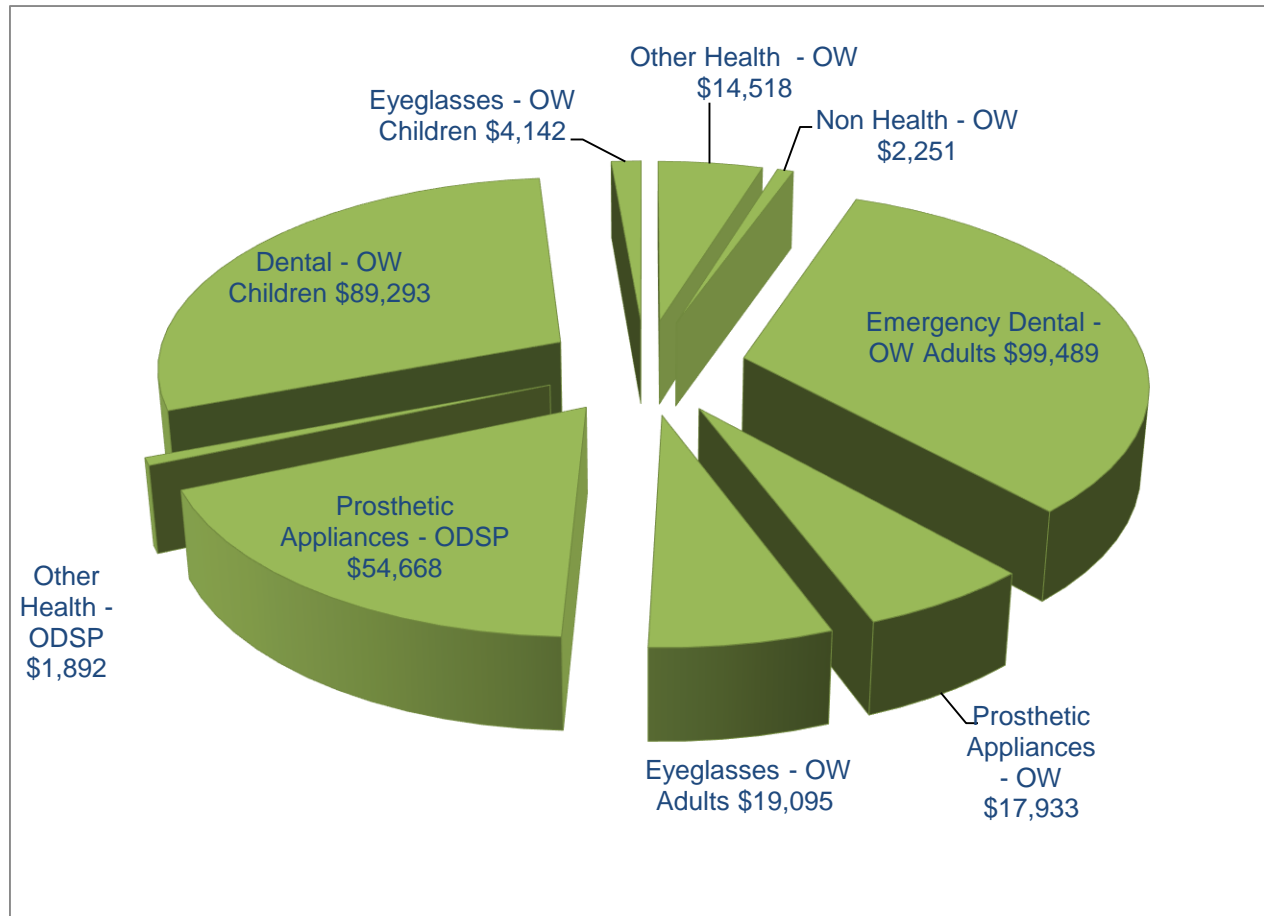


**Single individuals made up 61% of our caseload in 2013. This number has been relatively stable since 2011. The number of singles rose sharply from 52% in 2007 to 64% in 2011.**

**The majority of children assisted on Ontario Works are 6 years of age or younger. This percentage has remained consistent over the last few years.**

Data taken from Benefit Unit Summary Reports

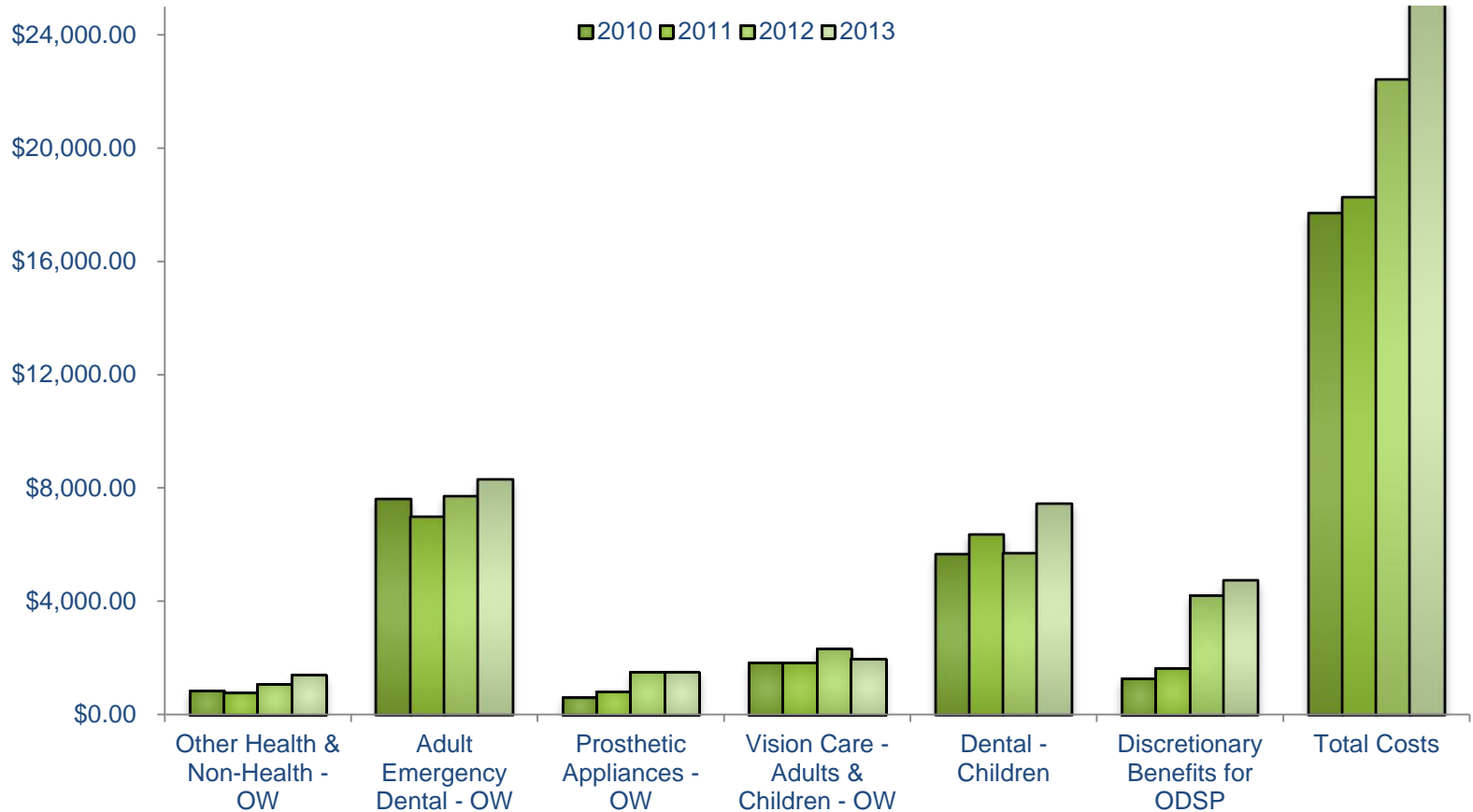
# Special Assistance Costs for 2013



**Special Assistance costs include both mandatory and discretionary benefits for Ontario Works clients and discretionary benefit costs for ODSP clients. Dental coverage and dentures made up 86% of the \$303,281 cost.**

Data taken from Form 5

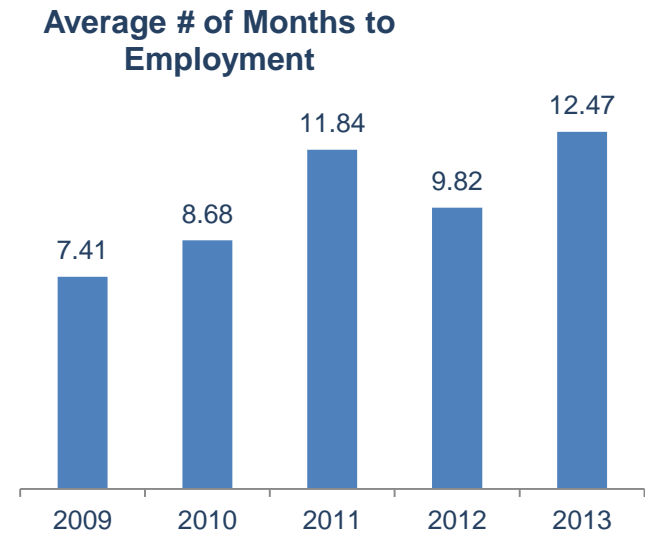
# Special Assistance Costs from 2010 - 2013



**Increased Special Assistance costs reflect increased caseloads, increased demand for children and emergency dental coverage for adults and increased denture coverage for ODSP clients.**

Data taken from Form 5.

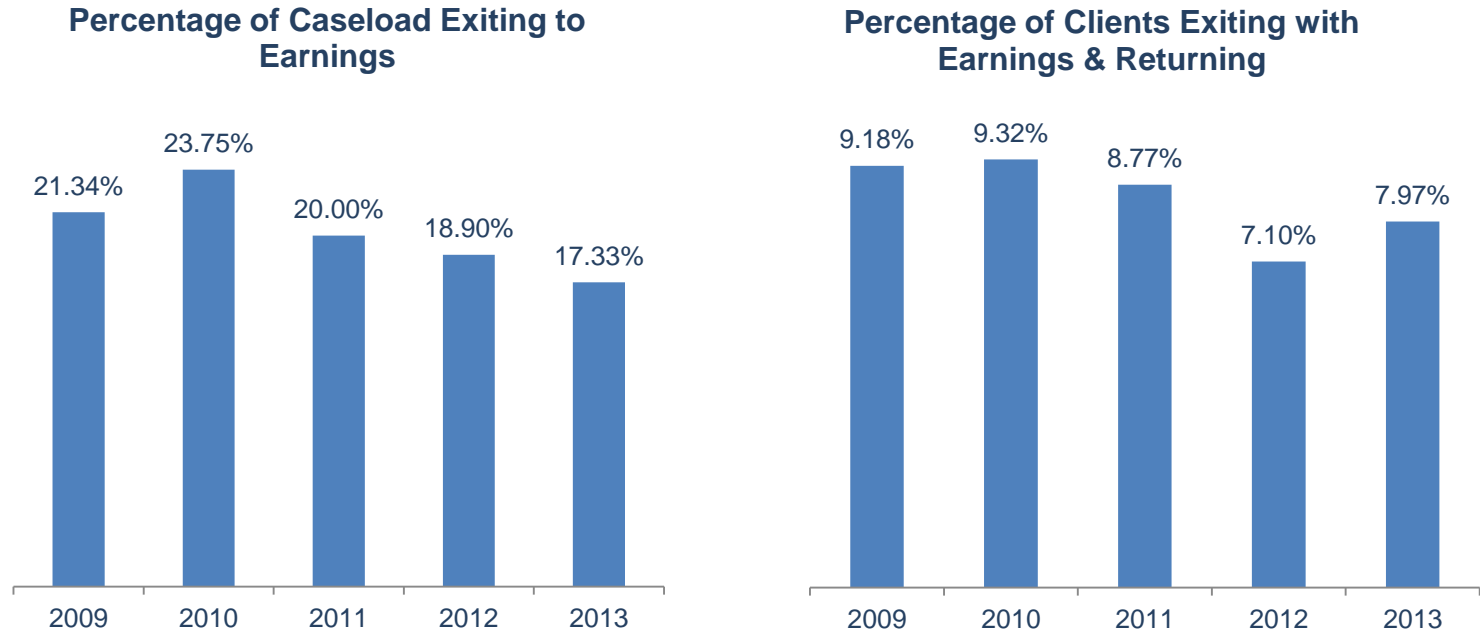
# Employment Data



**The percentage of clients with employment earnings outcome improved in 2013 however the length of time to secure that employment was longer.**

**Data taken from: Employment Measures Reports**

# Earnings Data



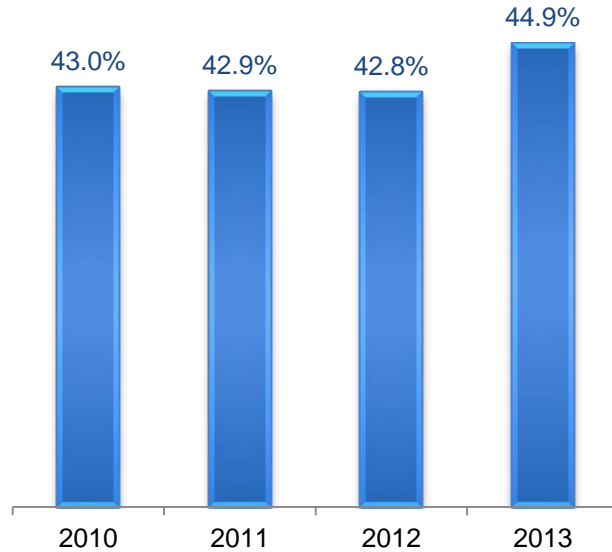
**The percentage of clients exiting with earnings was steadily increasing prior to the downturn in the economy. The percentage of those clients returning to Ontario Works within 24 months reflects the precariousness of their employment.**

Data taken from: Employment Measures Reports

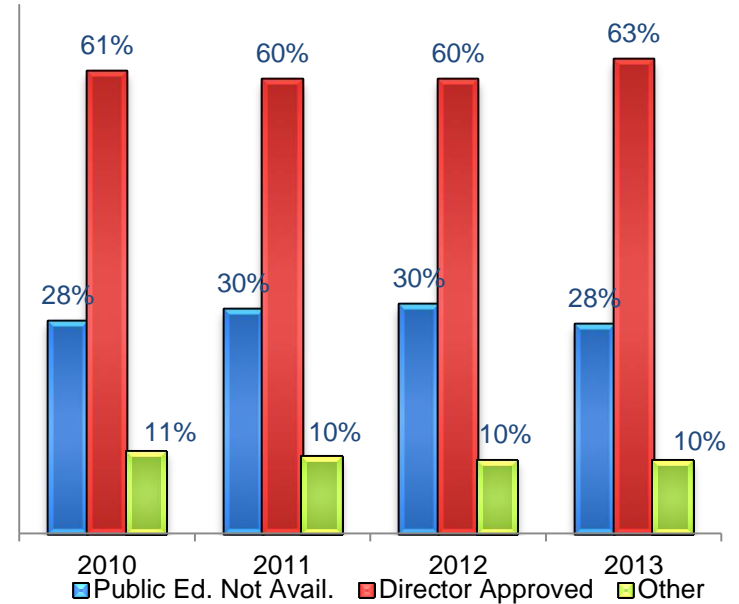


# Employment Activity Deferrals

## % of Clients Deferred



## Reasons for Deferrals



**The % of cases deferred remains high. This is an indication of the many issues that face our clients. A large majority of our deferred clients have a director approved exemption (medical reasons). The second largest deferred group is for parents with preschool children. Other exemption group includes maternity leaves, caregiver responsibilities for disabled children or spouse, and deferral for victims of family violence.**

Data taken from Form 5 and Deferrals\_Restriction Report.

# Summary of Funeral Costs

<b>Summary of SARs and Non SARs Funeral Costs</b>	<b>2009</b>	<b>2010</b>	<b>2011</b>	<b>2012</b>	<b>2013</b>
Average Cost per funeral	4,003	3,750	4,299	4,471	4,625
Average Recovery	1,191	952	1,495	1,848	1,899
Net Cost per funeral	2,812	2,798	2,805	2,624	2,726
# of SARs Funerals	28	23	29	31	32
# of Non SARs Funerals	12	16	9	15	21
<b>Total Number of Funerals</b>	<b>40</b>	<b>39</b>	<b>38</b>	<b>46</b>	<b>53</b>
<b>Total Cost</b>	<b>112,492</b>	<b>109,128</b>	<b>106,574</b>	<b>120,682</b>	<b>144,465</b>

**Grey County assists with the cost of Social Assistance Recipients' funerals (SARs) and low income funerals. The Ministry of Community & Social Services cost shares the SARs funerals.**

Data taken from Great Plains

## Other Social Service Clients

Grey County Social Services provides funding to six Domiciliary Hostel operators in Grey County. These hostel operators have the capacity to provide housing and support to 102 vulnerable residents with limited income.

Social Services also provides funding to four ODSP recipients through our Homemaker Program. This funding allows these residents to remain in their home and live independently

**Grey County Social Services**

*“A client centred organization building brighter futures”*