



# **Southgate Meadows Subdivision Information Report – 42T-2018-12 PDR-CW-07-19**

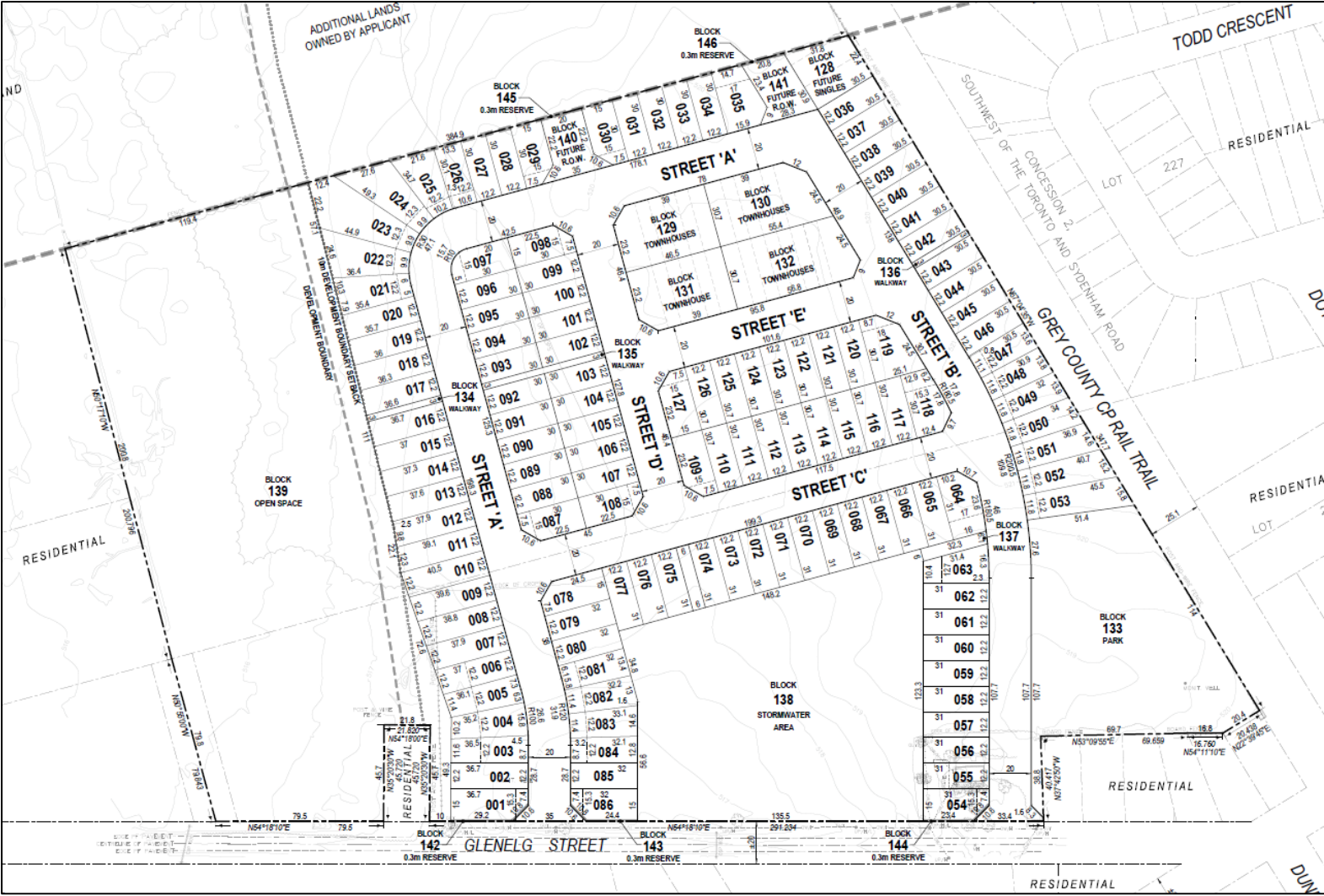
Part of Lots 227 and 22, Concession 2 SWTSR  
Geographic Township of Proton, Township of Southgate

This presentation contains a summary of Report PDR-CW-07-19. For more details on this application, please see the Staff Report.

# Subject Lands



# Proposed Plan



# Staff Recommendation

1. That Report PDR-CW-07-19 regarding an overview of proposed plan of subdivision application 42T-2018-12, proposing a total of 153 residential units, consisting of 127 single detached units, 26 townhouse units and 1 block set aside for 3 potential future residential units on lands described as Part of Lots 227 and 228, Concession 2 SWTSR, Township of Southgate, geographic Township of Proton, be received for information.