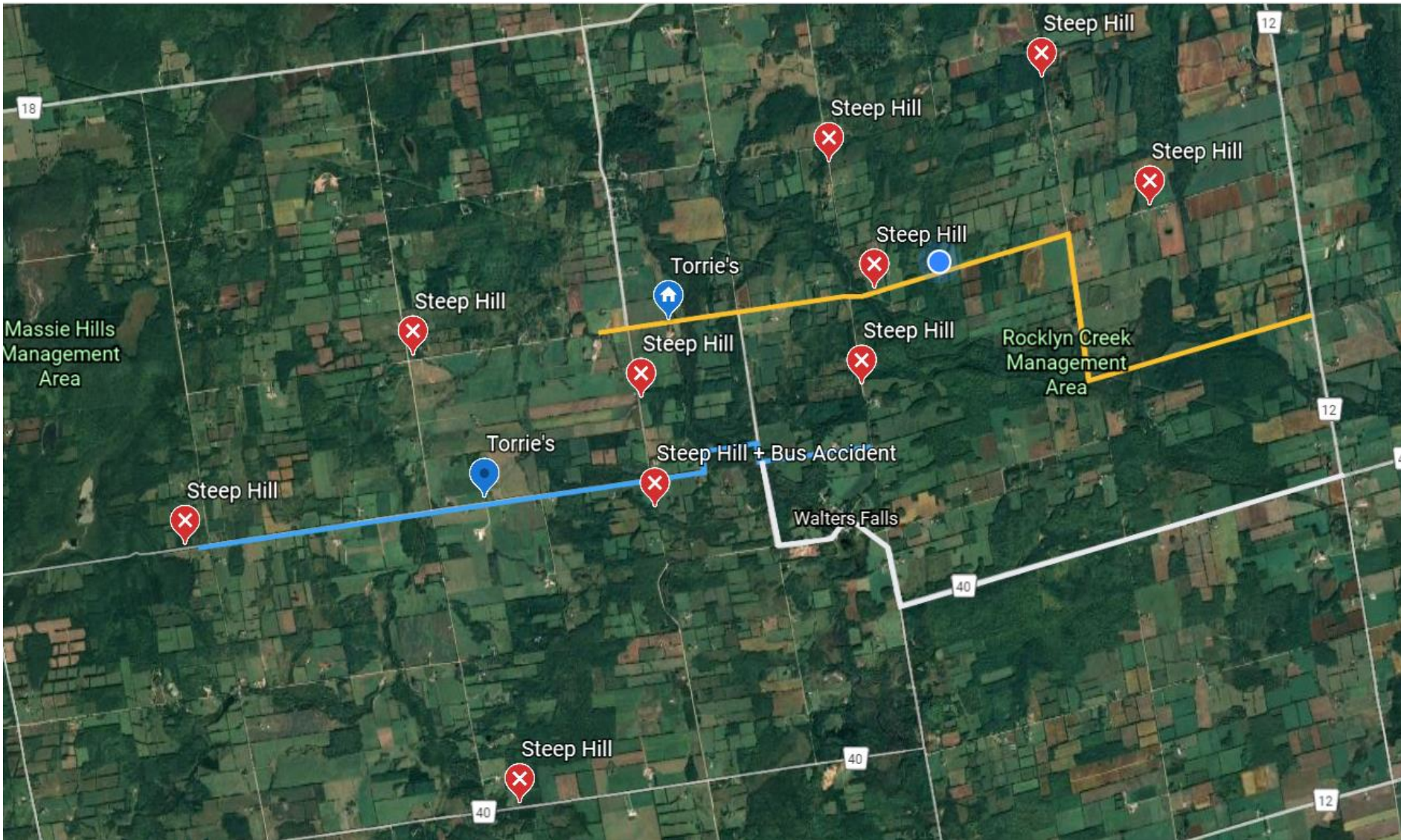


# BRIDGES 21 & 22

---

August 2021

# Map



# Usage Facts

- The agriculture sector is the largest gross income generator in area
- 29 farming operations that used bridges 21 & 22 when they were in service
- 5 local business that used this infrastructure
- 9 tourists attractions generating increased traffic
- There is growth in residents and businesses in the Walter's Falls/Bognor area
- Duty to keep bridges open under Ont Reg 104/97 Sec 3

February 2020



January 2021



# Safety issues

- Alternate routes are not safe due to excessive grade
- Ag operators and their employees risks their lives, equipment and produce using them every day
- The valley is the furthest away from fire, ambulance and police services
- Two kids were sent to hospital in February 2020 in a bus accident that was partly caused by the two bridges being closed
- Local users of bridges 21 & 22 pay on average \$1.1M per year of property taxes (excludes education levies) to both municipalities & to the County

# Economic activity

Type of activity	Annual Gross Income	Total per year
Agriculture	9,629,000	<b>16.5M</b>
Agri-biz	3,902,500	
Businesses	2,329,000	
Other income	592,000	

Based on 2016-17 data available from OMAFRA, Agricorp, Stats Can and Industry Canada.

Agriculture revenue does include quota income.

# Individual impact of closure

Routes		Dist/km	\$/KM	\$/trip	# trip/yr	Time (hr)	Total	Dangers
West	Alt A	11.7	0.56	7	576	0.20	<b>\$3,774</b>	Steep hill on Syd/St Vincent Townline Steep hill up Line 11
	Alt B	22.76	0.56	13	576	0.38	<b>\$7,341</b>	Steep Hill on Euphrasia/Holland townline Steep Hill on CR12 Steep Hill on Line 11
East	Alt A	8	0.56	4.48	576	0.13	<b>\$2,580</b>	Steep Hill on CR12 Steep Hill on Line 11
	Alt B	11.36	0.56	6.36	576	0.19	<b>\$3,664</b>	Steep Hill on Euphrasia/Holland townline
<b>Average</b>		<b>13.46</b>				<b>0.22</b>	<b>\$4,340</b>	

# Why these bridges are important

- They support 16M+ a year of Gross Municipal Product
- The topography of the area does not lend itself to safe alternate routes (dangerous steep hills, valleys)
- It causes unnecessary accidents, injuries, lost of produce (spillover on hills, etc.) and productivity
- It increases costs for users (3 to 5 times their annual taxes)
- It reduces access for fire, police and ambulance services
- Creates a second class of ratepayers who receive less services from the municipalities/county despite paying over \$1.1M of property taxes per year



# Moving forward

- We need Bridges 21 & 22 re-opened in 2021
- We need all partners on this file to work together
- We need a shared vision and plan for the growth and development of the valley (Chatsworth + Meaford + County) to accommodate growth in residents, business activity and tourism
- We need a commitment to invest in the infrastructure to support the vision

Your Worship, will this Council:

1. Support its largest community wealth generator,
2. Accept responsibility for the townline bridge between Chatsworth, and Meaford,
3. And fund its repairs?