



BURNSIDE



HIGHWAY 26 /GREY ROAD 2 INTERSECTION IMPROVEMENTS

The Town of The Blue Mountains

MUNICIPAL CLASS ENVIRONMENTAL ASSESSMENT STUDY

Study Area



Issues

- Traffic congestion and projected increases in transportation demands
- Access management and safety issues for Highway 26
- Sightline deficiencies and turning movement safety issues at Georgian Trail crossing, Clark Street, Lakeshore Road
- Historical high collision rate along Highway 26 corridor



Possible Improvements

- Highway 26/Grey Road 2 intersection
- Grey Road 2/Clark Street intersection
- Highway 26/Lakeshore Road intersection
- Georgian Trail alignment at Highway 26

Considerations

- Highway 26 is subject to Highway Access Management
- MTO's Rehabilitation Study for the Highway 26 corridor
- MTO's Highway 26 Transportation Study, potential by-pass opportunities
- Highway 26 gateway to Thornbury



Alternative Solutions

1. Do Nothing (Existing Conditions)
2. Signalization
3. Four Leg Roundabout
4. Five Leg Roundabout

The alternative solutions include a combination of improvement options including realignment or closure of intersections, additional turning lanes and additional through lanes.

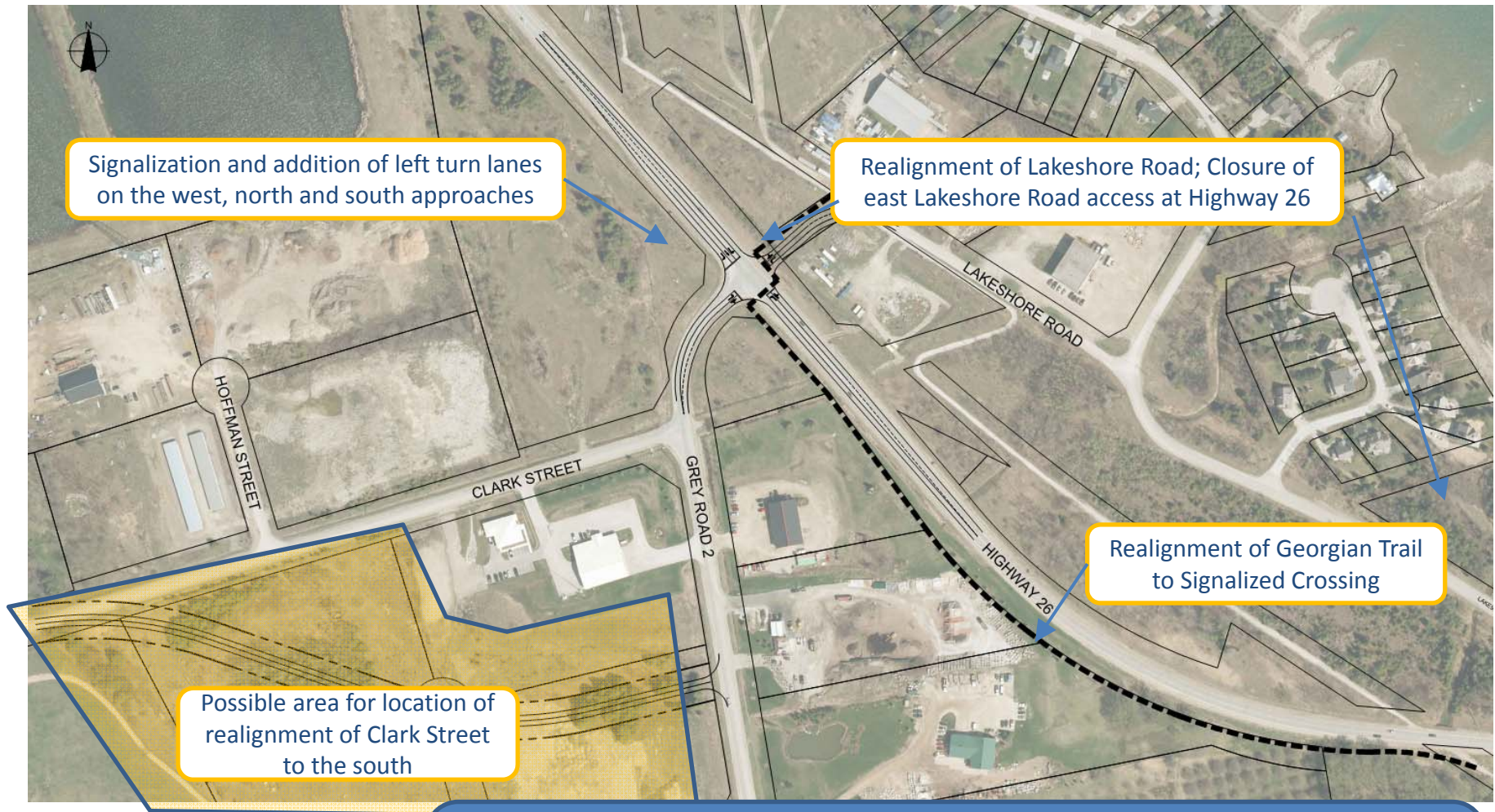


BURNSIDE

Option 1: Do Nothing (Existing Conditions)



Option 2: Signalization



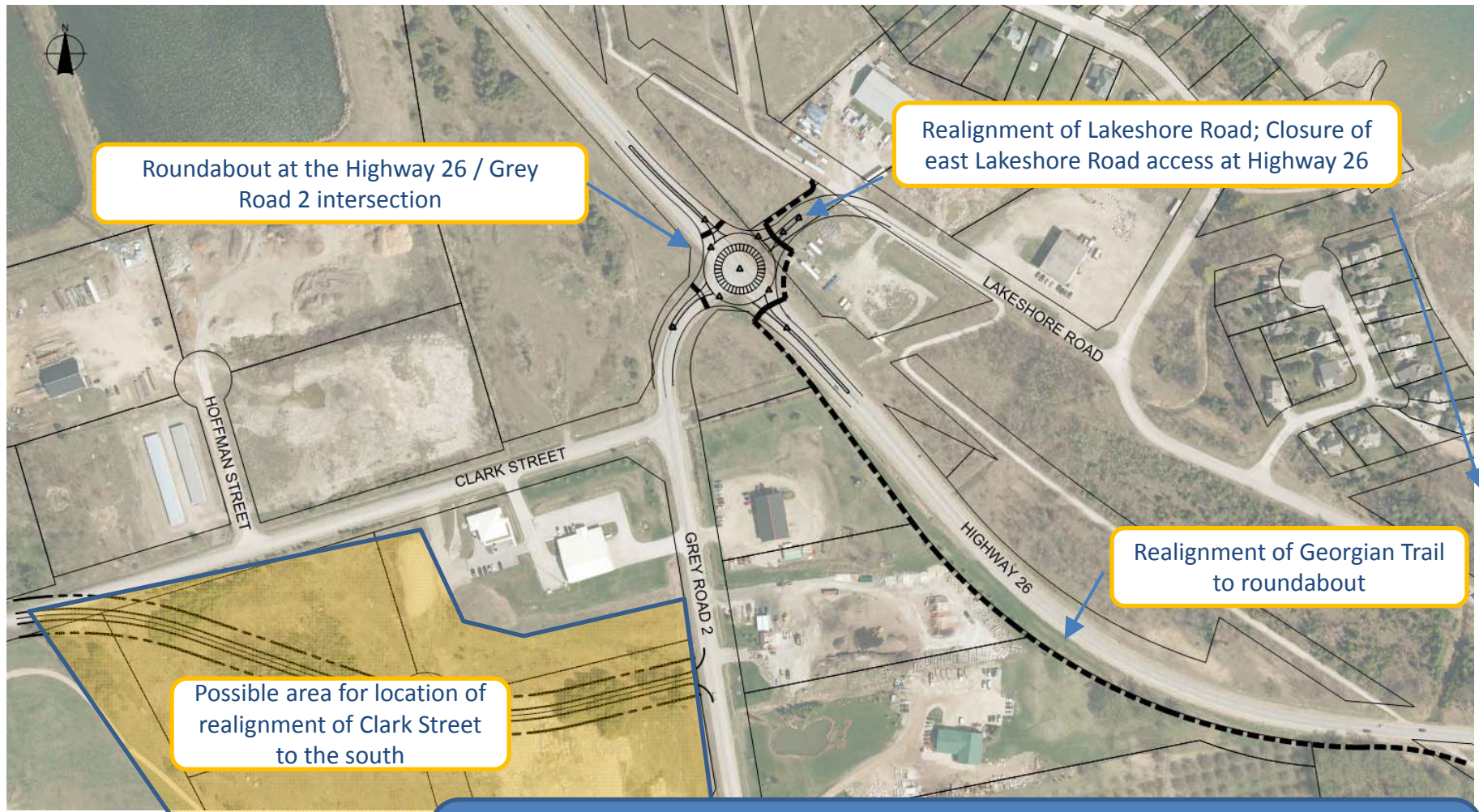
Clark Street:

Various improvements to the existing Grey Road 2 and Clark Street intersection were considered, however, none of the improvements fully addressed the technical concerns, therefore realignment to the south is preferred.



BURNSIDE

Option 3: Four Leg Roundabout



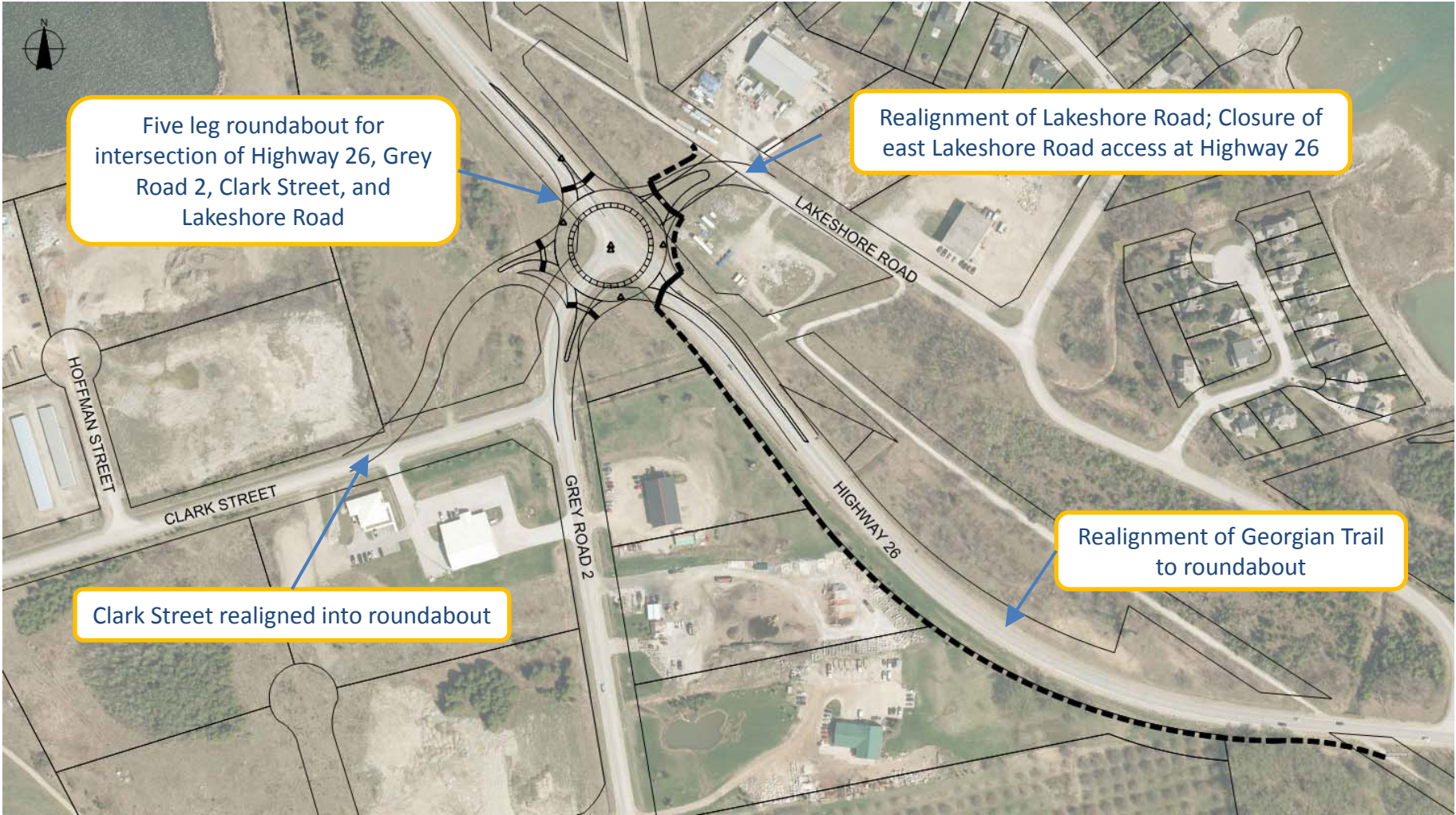
Clark Street:

Various improvements to the existing Grey Road 2 and Clark Street intersection were considered, however, none of the improvements fully addressed the technical concerns, therefore realignment to the south is preferred.



BURNSIDE

Option 4: Five Leg Roundabout



Preliminary Preferred Alternative(s)

Option 2: Signalization

- Signalization at Hwy 26 / GR 2 / Lakeshore Road and addition of left turn lanes on the west, north and south approaches
- Realignment of Lakeshore Road to Hwy 26 / GR 2 intersection, closure of east Lakeshore Road access at Hwy 26
- Realignment of Georgian Trail to cross at Hwy 26 signalized intersection
- Realignment of Clark Street to the south with stop control

Option 3: Four Leg Roundabout

- Single lane roundabout in short term at Hwy 26 / GR 2 / Lakeshore Road
Potential for two lane roundabout to be required in the long term
- Realignment of Lakeshore Road to Hwy 26 / GR 2 intersection, closure of east Lakeshore Road access at Hwy 26
- Realignment of Georgian Trail to cross Hwy 26 at intersection
- Realignment of Clark Street to the south with stop control



Next Steps

- Public Information Centre.....**Spring, 2014**
- Input from public and agencies.....**Spring, 2014**
- Selection of preferred alternative.....**Spring, 2014**
- Issue Notice of Study Completion
and provide Project File Report for
public review and comment
(30 day review period).....**Summer, 2014**
- Preliminary Design**Fall, 2014**