



BURNSIDE

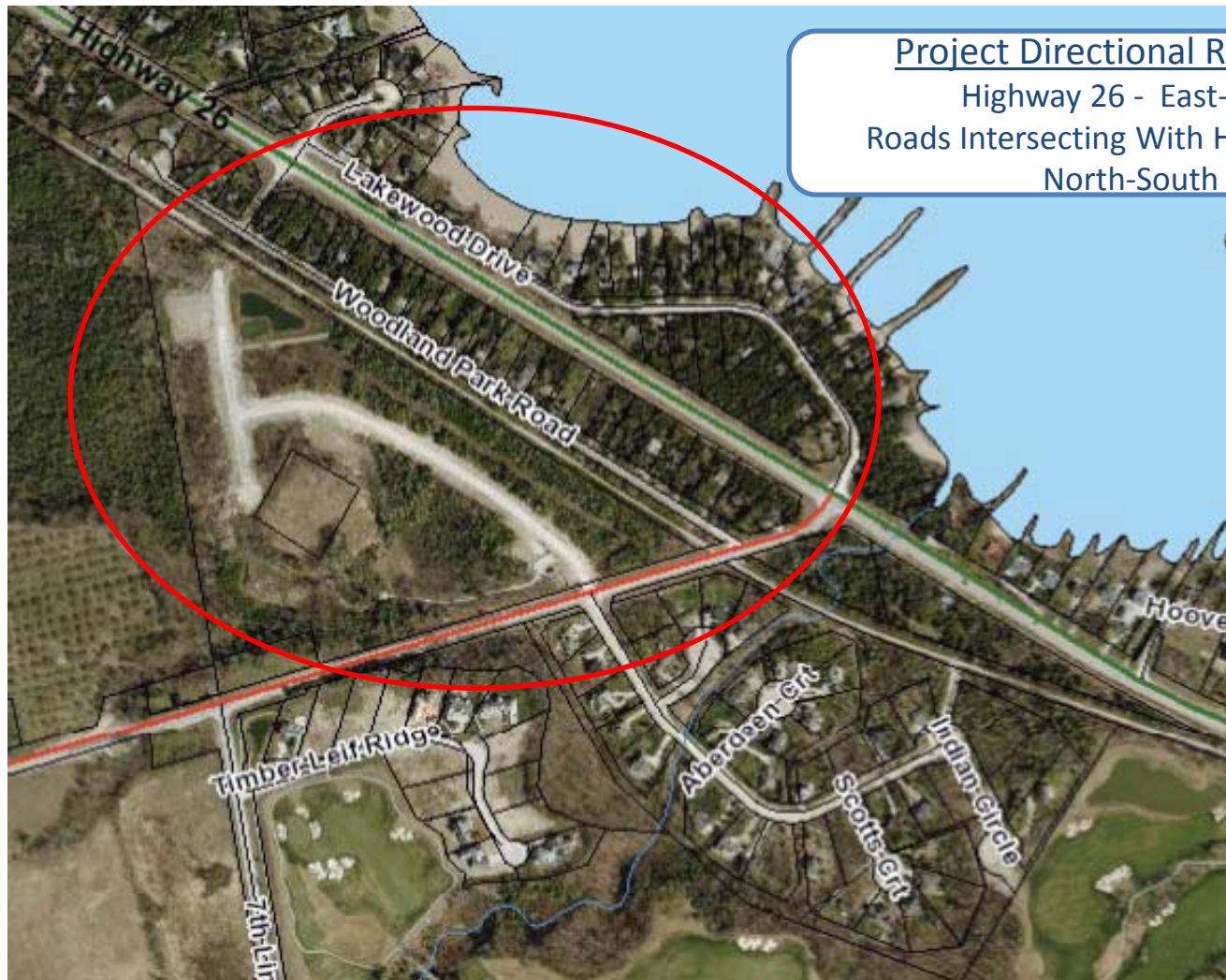


HIGHWAY 26 /GREY ROAD 40 INTERSECTION IMPROVEMENTS

The Town of The Blue Mountains

MUNICIPAL CLASS ENVIRONMENTAL ASSESSMENT STUDY

Study Area



Project Directional Reference
Highway 26 - East-West
Roads Intersecting With Highway 26 -
North-South



BURNSIDE



Issues

- Traffic congestion
- Access management and safety issues for Highway 26
- Sight distance deficiency
- Turning movement safety
- Historical high collision rate along Highway 26 corridor



Possible Improvements

- Highway 26/Grey County Road 40/Lakewood Drive
- Highway 26/Lakewood Drive/Woodland Park Road
- Grey County Road 40/Woodland Park Road
- Interconnection between Woodland Park Road and the adjacent Georgian Glen development



BURNSIDE

Considerations

- Highway 26 is subject to Highway Access Management
- MTO's Rehabilitation Study for the Highway 26 corridor
- MTO's Highway 26 Transportation Study, potential by-pass opportunities



Alternative Solutions

1. Do Nothing
2. Signalization
3. Additional turning lanes
4. Additional through lanes
5. Re-alignment or closure of intersections
6. Roundabout



Option 1: Do Nothing (Existing Conditions)



Option 2: Signalization



BURNSIDE



Option 3: Additional Turning Lanes



Eastbound and Westbound left-turn lanes on Highway 26 at Lakewood Dr./ Woodland Park Rd.



BURNSIDE



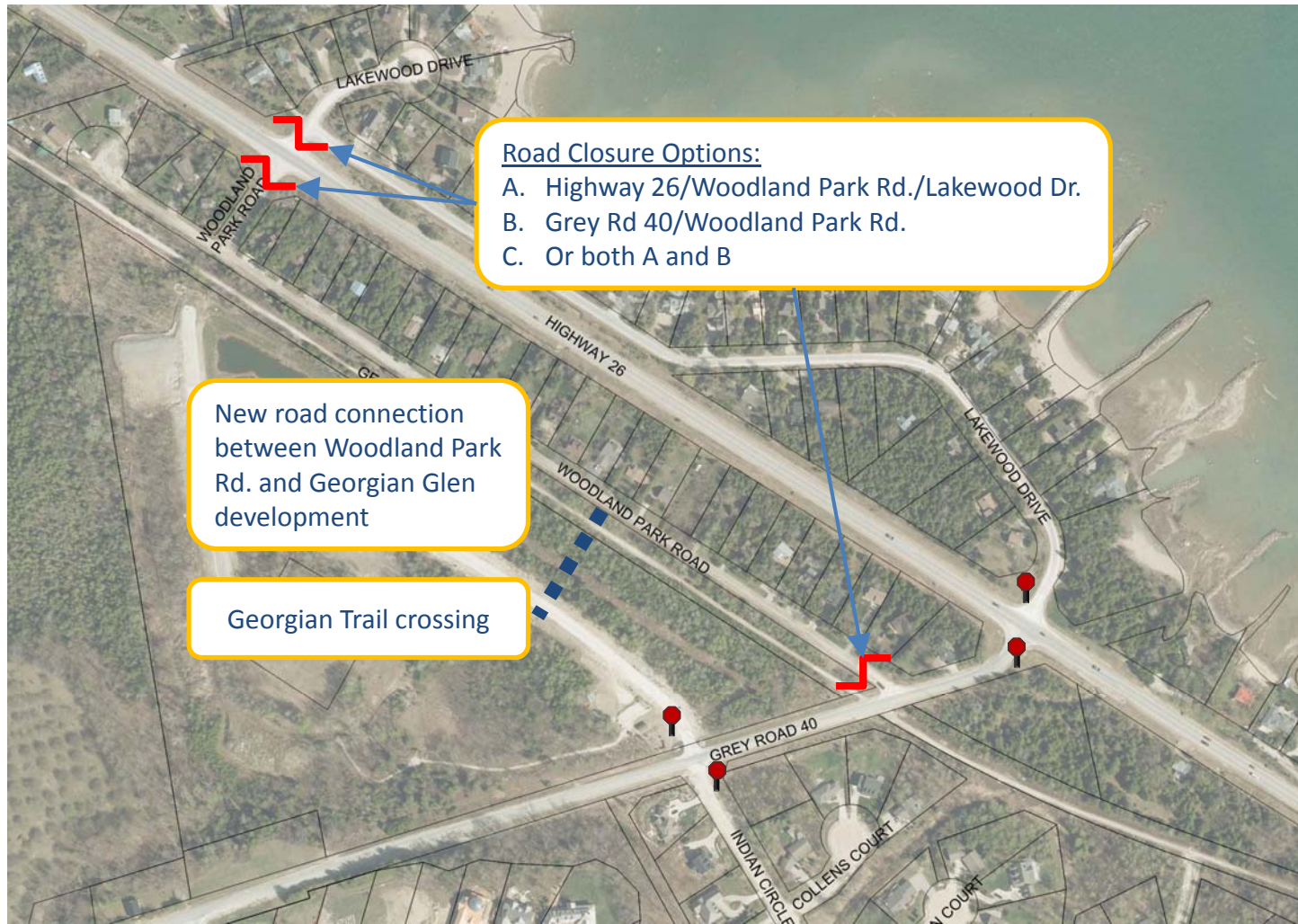
Option 4: Additional Through Lanes



BURNSIDE



Option 5: Re-alignment or Closure of Intersection (Access Management)

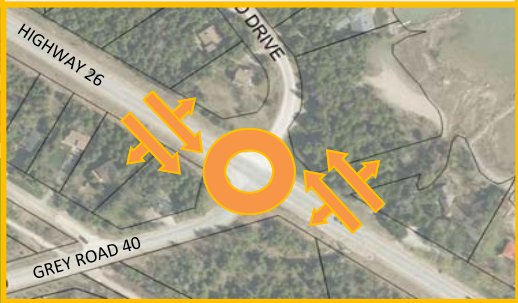


Option 6: Roundabout



Single lane roundabout at intersection of Highway 26 / Grey Road 40 / Lakewood Drive

Two-lane roundabout may be required in the longer term, or if implemented with additional through lanes on Highway 26



Preliminary Preferred Alternative- Option 5c



BURNSIDE

Next Steps

- Input from public and agencies.....**Spring, 2014**
- Selection of preferred alternative.....**Spring, 2014**
- Issue Notice of Study Completion and provide Project File Report for public review and comment (30 day review period).....**Summer, 2014**
- Preliminary Design**Fall, 2014**