



Project
Leaders

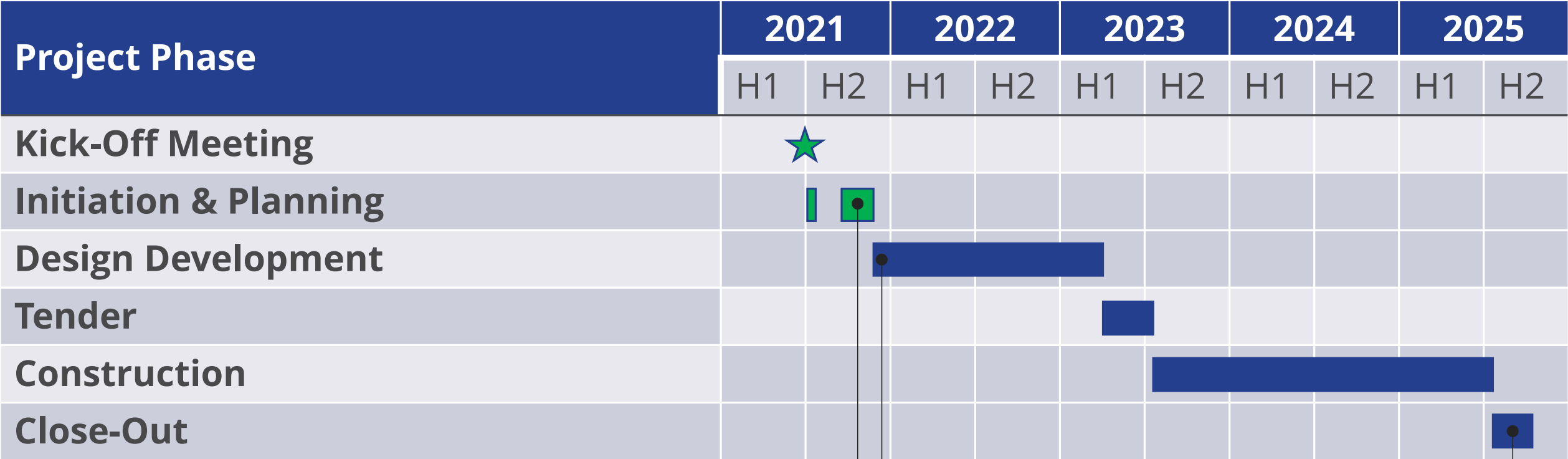


Grey County Rockwood Terrace LTC Redevelopment Project

Long-Term Care Redevelopment Task Force Update
November 4, 2021

Grey County – Rockwood Terrace LTC Redevelopment Project

Overall Schedule – Rockwood Terrace



■ Actual
■ Ongoing / Forecast

Prime Consultant RFP Issued on September 7th, 2021

Kick-off Meeting with Prime Consultant: November 15th, 2021

First Resident Date Milestone: July 2025

Grey County – Rockwood Terrace LTC Redevelopment Project

Overview of Process

| Criterion | Maximum Points |
|------------------------------|----------------|
| Mandatory Criteria | Pass/Fail |
| Understanding of the project | 10 |
| Corporate Qualifications | 15 |
| Proponent's Team | 30 |
| Project Delivery | 25 |
| Fee | 20 |
| Total Score | 100 |

- Standard form of Contract for Architect's Services (OAA 600-2013) with Supplementary Conditions
- Review by Grey County (including legal & insurance)

Grey County – Rockwood Terrace LTC Redevelopment Project

Prime Consultant Procurement - Timeline

| Activity | Date / Duration |
|---------------------------------------------------------------------|--------------------------------------------------|
| Draft RFP Documents issued to Grey for Review | June 30 th , 2021 |
| Review Comments with Grey | July 21 st , 2021 |
| Issue RFP, Manage Q&A and Issue Addenda | Sep 7 th - Oct 7 th , 2021 |
| Receive and Review Submissions | Oct 7 th – Nov 4 th , 2021 |
| Interviews | October 25 th , 2021 |
| LTC Redevelopment Task Force Approval of Prime Consultant Selection | November 4 th , 2021 |
| Council Approval of Prime Consultant Selection | November 12 th , 2021 |
| Kick-off Meeting with Prime Consultant | November 15 th , 2021 |

Grey County – Rockwood Terrace LTC Redevelopment Project

Next Steps

- Kick-off meeting with Prime Consultant
- Visioning sessions, workshops and user group meetings
- Preparing alternative conceptual master plan & conceptual floor plans that will support the development of a Class D construction cost estimate