



Board Report

October 28, 2016

Emergency Preparedness

For the Board of Health

Emergency Preparedness: Role and Responsibility of Public Health

- Referenced in Ontario Public Health Standards:
 - Emergency Preparedness Program Standard
 - Requirement #7 “...ensure that its officials are oriented on the board of health’s emergency response plan in accordance with Emergency Preparedness Protocol”
- Specific details outlined in Emergency Planning Protocol
- Health Unit Emergency Preparedness Resources
 - Emergency Response Plan
 - Pandemic Plan
 - Business Continuity Plan
 - Hazardous Identification and Risk Assessment (HIRA) Plan
 - On-Call Manual

Nuclear Emergency Plan

- Additional emergency preparedness responsibility as a result of a nuclear power facility in our geographic area as outlined in:
 - Provincial Nuclear Emergency Response Plan
 - Radiation Health Response Plan
- Health Unit's Role in the Nuclear Plan
 - Liaise and communicate with other local agencies
 - Risk Communication and Public Awareness
 - Distribution of KI
 - Inspection of reception or evacuation centres
 - Orders of enforcement action r/t food and water ingestion control
 - Aid in risk assessment, assessment and surveillance

Huron Resolve Exercise

- Scope of Huron Resolve
 - “ Five day scenario-based functional exercise with selected full-scale elements designed to practice interoperability, plans and procedures while responding to a nuclear emergency at the Bruce Power facility.”
 - Exercise ran over a continuous 93 hour period from October 3-7, 2016
 - Involved municipal, provincial, national and international stakeholders

Huron Resolve Exercise

- General Objectives of Huron Resolve Exercise
 - Practices protecting public health and safety in the event of a nuclear emergency
 - Train, test and evaluate elements of the Provincial Nuclear Emergency Response Plan
 - Enhance the collective capability to respond to the consequences of a nuclear emergency at the Bruce Power facility
 - Demonstrate a commitment to an ever-improving and robust emergency preparedness regime
- *(objectives derived from the 64 organizational objectives submitted and outlined in the Exercise Huron Resolve Participant Handbook)*

Huron Resolve Exercise

- Health Unit Objectives of Huron Resolve Exercise
 - Increase knowledge of the Public Health Inspector's (PHI) role in evacuation centres (per RHRP)
 - Increase PHI capacity/confidence with this role by carrying out a simulated inspection of the reception/evacuation centre (sanitation, food, and water).
 - Develop and/or utilize existing risk communication and public health messages related to KI use through simulating an MOH media interview, and other communication means identified (e.g. press conference, social media).
 - Build a greater understanding of the partners involved in the Radiation Health Response Plan (2014) and the co-ordination of roles by participating in the writing boards, September table top exercise, and the October exercise.

Sample Emergency Bulletins from Province of Ontario

FOR INTERNAL USE ONLY		PROVINCE OF ONTARIO	
Reference:	Bruce Emergency Bulletin # 6	Delayed Emission	
Revised:	December 2010	Issued At:	Date: 2016-10-06 Time: 14:00
Summary	Evacuate PZ		

EXERCISE EXERCISE EXERCISE

PROVINCE OF ONTARIO EMERGENCY BULLETIN

Note: Paragraph numbers are for reference only and are not to be read

TEXT TO BE BROADCAST

This is an official emergency bulletin issued by the Province of Ontario. It applies to people near the Bruce Power Site.

There has been an emergency reported at the Bruce Power Site. A release of radioactivity from the station is expected by 11:00PM. Provincial, municipal and nuclear facility emergency staff are responding to the situation.

Evacuation is required for everyone within the following area:

- Bruce-Saugeen Townline to the north;
- 10 Side Road to the east;
- Concession 7 to the south; and
- Lake Huron shoreline to the west.

Everyone in this area, including motorists and boaters, must leave this area now.

KI pill ingestion is not recommended at this time.

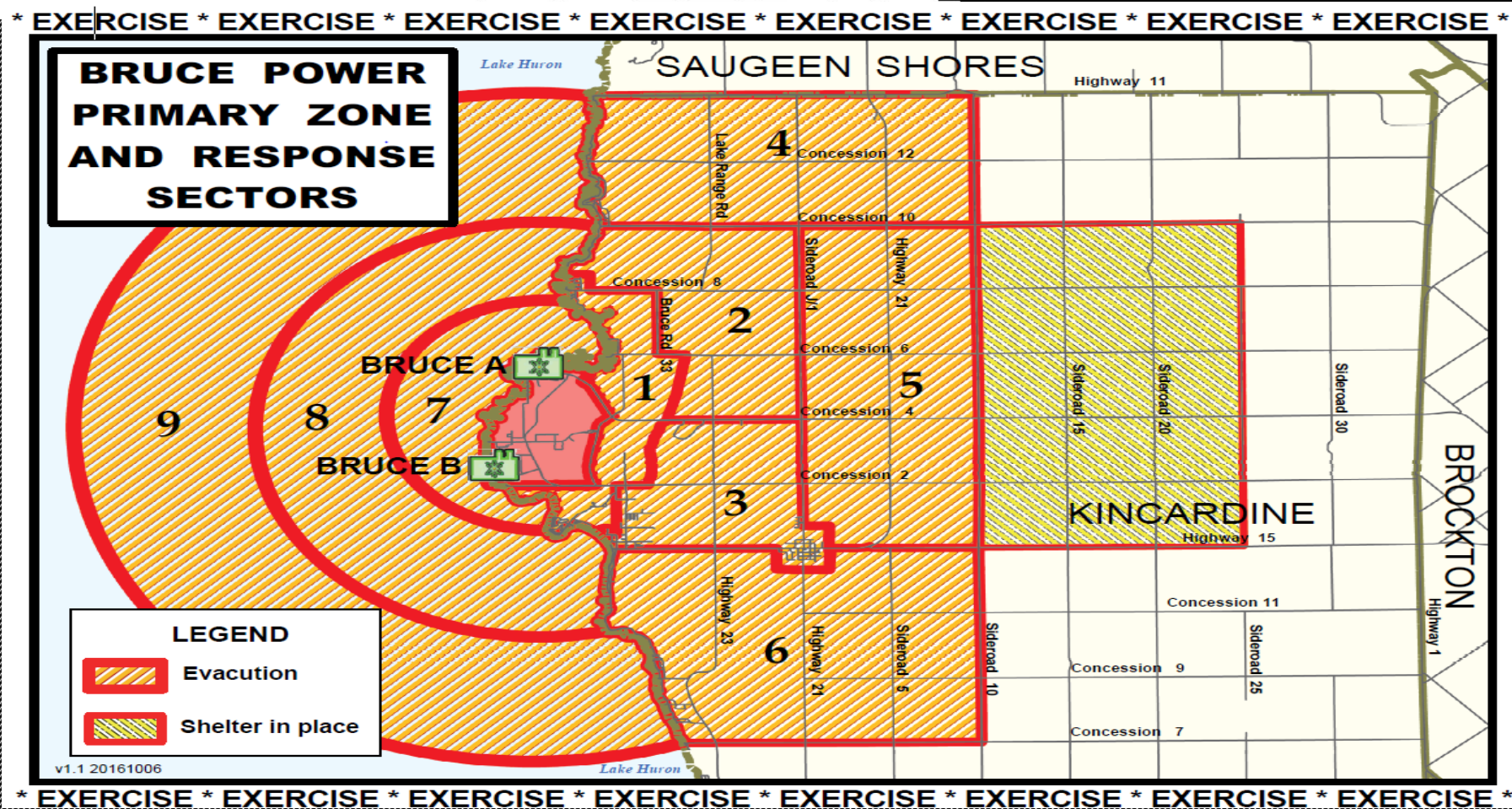
All boaters on Lake Huron must stay outside 10 kilometres from the Bruce Power Site.

IF YOU NEED A PLACE TO STAY, please go to the Reception Centre at Davidson Community Centre in Kincardine.

Sheltering is required for everyone within the following area:

- Concession 10 to the north;
- 25 Side Road to the east;
- Bruce Road 15 to the south; and
- 10 Side Road to the west.

Evacuation and Shelter in Place Zones



Public Health and Municipalities: Partnership in Emergency Planning

- We are regulated to use IMS system-Counties and Municipalities are not- at this time
- We are required to be engage and collaborate with community partners including all municipal and county CEMC's in developing emergency response plans. This is a reciprocal relationship as we also have roles and responsibilities outlined with each municipal and county plan
- Some regions have developed a joint plan (eg Perth-where municipalities have joined CEMC's and plans)

Incident Management System (IMS)



The Honourable Justice Bélanger, Commissioner of the Elliot Lake Inquiry, recommended that all municipalities in Ontario implement the Incident Management System.

Recommendation 2.10:

The province should put in place strategies that will increase the acceptance and actual use of the Incident Management System (IMS) – including simplifying its language and instituting joint training and exercises – so as to be able to make it mandatory in the near future.

```
graph TD; Command[Command] --- Operations[Operations]; Command --- Planning[Planning]; Command --- Logistics[Logistics]; Command --- Finance[Finance/Administration];
```

Command

Operations

Planning

Logistics

Finance/
Administration

Command

```
graph TD; Command[Command] --- EO[Emergency Information Officer]; Command --- SO[Safety Officer]; Command --- LO[Liaison Officer]; Command --- Ops[Operations]; Command --- Plan[Planning]; Command --- Log[Logistics]; Command --- Fin[Finance];
```

The diagram is an organizational chart for a 'Command' structure. At the top is a blue box labeled 'Command'. A vertical line descends from this box. Three horizontal lines branch off to the right, connecting to three stacked blue boxes: 'Emergency Information Officer', 'Safety Officer', and 'Liaison Officer'. Below the vertical line, a horizontal line branches out to the left and right, connecting to four blue boxes: 'Operations', 'Planning', 'Logistics', and 'Finance'.

Emergency
Information Officer

Safety Officer

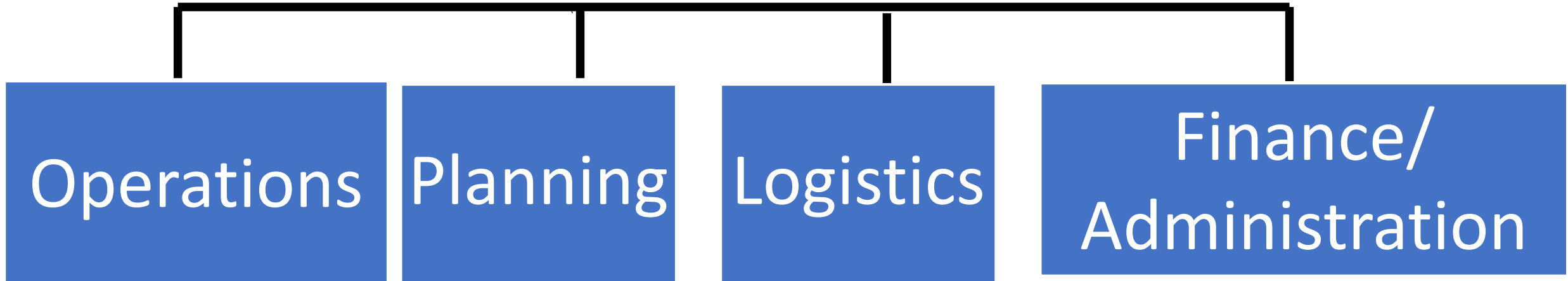
Liaison Officer

Operations

Planning

Logistics

Finance



Operations

Planning

Logistics

Finance/
Administration