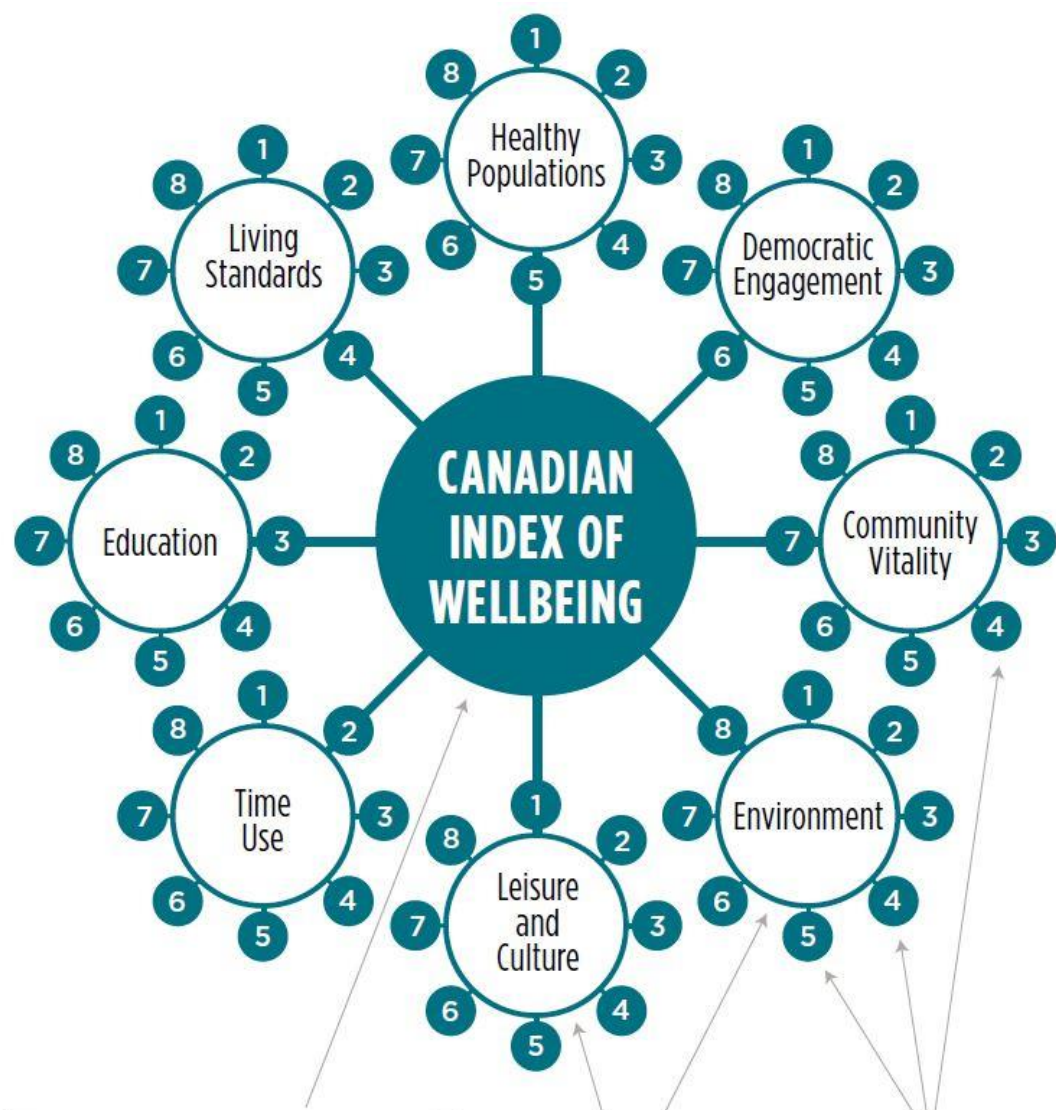


# CIW *Community Wellbeing Survey* in Bruce and Grey Counties: **A Closer Look**



*Canadian Index of Wellbeing*  
University of Waterloo

Wellbeing in Bruce and Grey Counties  
April 2019



**CIW Composite Index**  
64 Indicators consolidated into a single CIW average

**8 Domains**

**8 Indicators**  
in each domain

# CIW Community Wellbeing Survey

## Sample

- Stratified (by municipality) random sample of households in the Counties

## Questionnaire

- Behaviours and perceptions directly related to each of the CIW's domains
- Aspects of and overall wellbeing
- Comprehensive demographics

## Analysis

- Technical report summarising all measures in the questionnaire
- Targetted analyses on issues of local concern

**Community Wellbeing Survey**

**Section A: Community Vitality**

	No	Yes
In the past 12 months, did you do any unpaid volunteer work for any organization?	<input type="radio"/>	<input type="radio"/>

	No	Yes
<b>In the past 12 months, were you a member of or a participant in...</b>		
a union or professional association?	<input type="radio"/>	<input type="radio"/>
a political party or group?	<input type="radio"/>	<input type="radio"/>
a sports or recreational organization (e.g., hockey league, health club, golf club)?	<input type="radio"/>	<input type="radio"/>
a cultural, educational or hobby organization (e.g., theatre group, book club, bridge club)?	<input type="radio"/>	<input type="radio"/>
a religious-affiliated group (e.g., church youth group, choir)?	<input type="radio"/>	<input type="radio"/>
a school group, neighbourhood, civic or community association (e.g., PTA, alumni, block parents, neighbourhood watch)?	<input type="radio"/>	<input type="radio"/>
a service club or fraternal organization (e.g., Kiwanis, Knights of Columbus, the Legion)?	<input type="radio"/>	<input type="radio"/>
a public interest group (e.g., focused on the environment, animal welfare, food security, homelessness)?	<input type="radio"/>	<input type="radio"/>
some other organised group or activity not mentioned above?	<input type="radio"/>	<input type="radio"/>

	No	Yes
<b>In the past 12 months, did you provide any unpaid help to anyone ...</b>		
with work at their home such as cooking, cleaning, gardening, maintenance, painting, shovelling snow, or car repairs?	<input type="radio"/>	<input type="radio"/>
by doing any shopping, driving someone to the store, or to any other appointments?	<input type="radio"/>	<input type="radio"/>
with paperwork tasks such as writing letters, doing taxes, filling out forms, banking, paying bills, or finding information?	<input type="radio"/>	<input type="radio"/>
with health-related or personal care, such as emotional support, counselling, providing advice, visiting the elderly, unpaid babysitting?	<input type="radio"/>	<input type="radio"/>
with unpaid teaching, coaching, tutoring, or assisting with reading?	<input type="radio"/>	<input type="radio"/>

# Reliability of Sample and Results

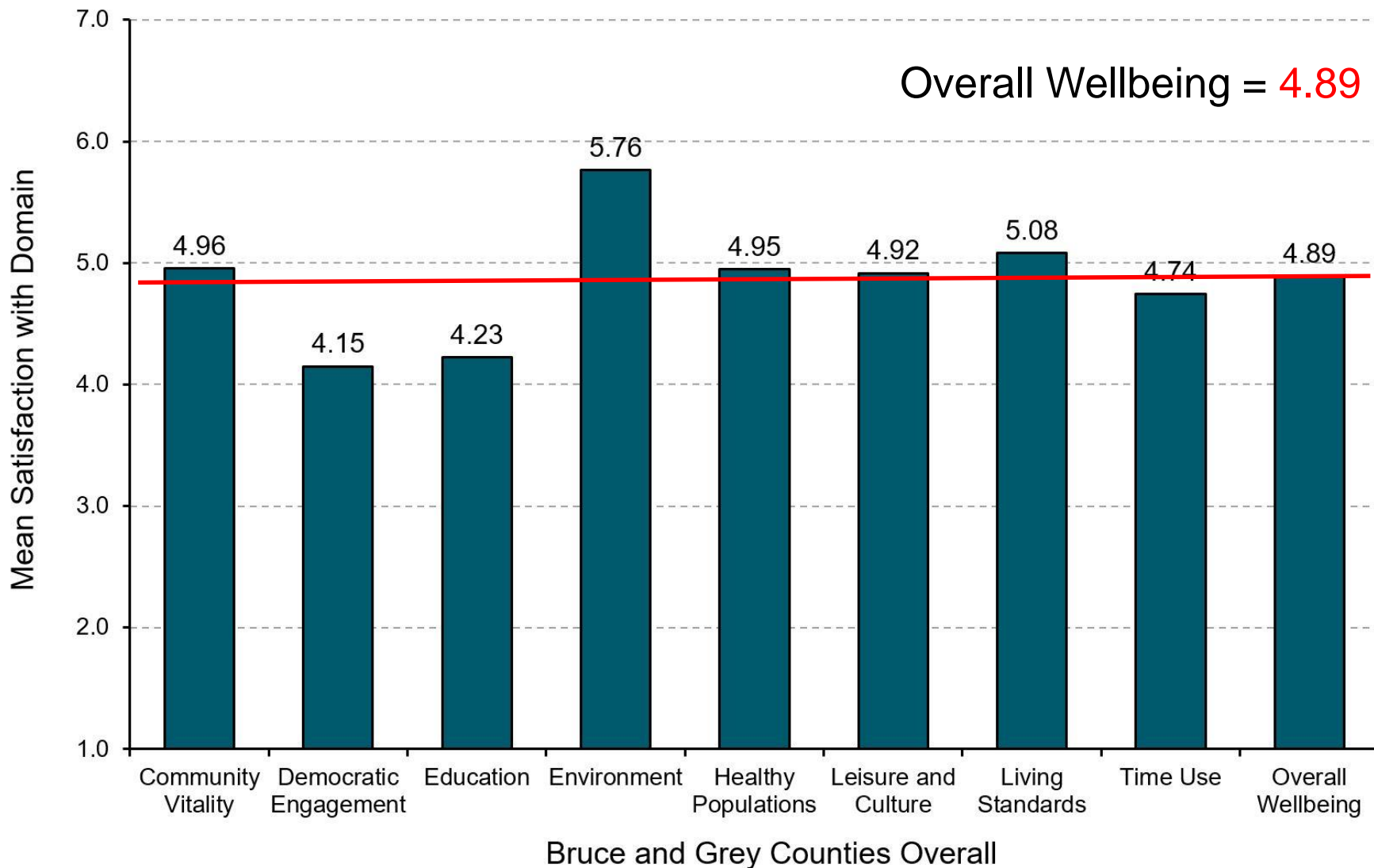
## **Sample**

- A representative sample of over 17,000 households from across both Counties invited to participate in the survey
- Estimated response rate of 10.4% – above expectation for general population survey
- Weighting of data by municipality, age, and sex ensures balanced representation of voices from across the Counties

## **Results**

- Careful assessment of all respondents to ensure *reliable* and *valid* responses to majority of questions on survey
- With over 1,759 viable respondents from the Counties, the margin of error is  $\pm 2.4\%$  (19 time out of 20) – better than most national polls

# Wellbeing in Bruce and Grey Counties



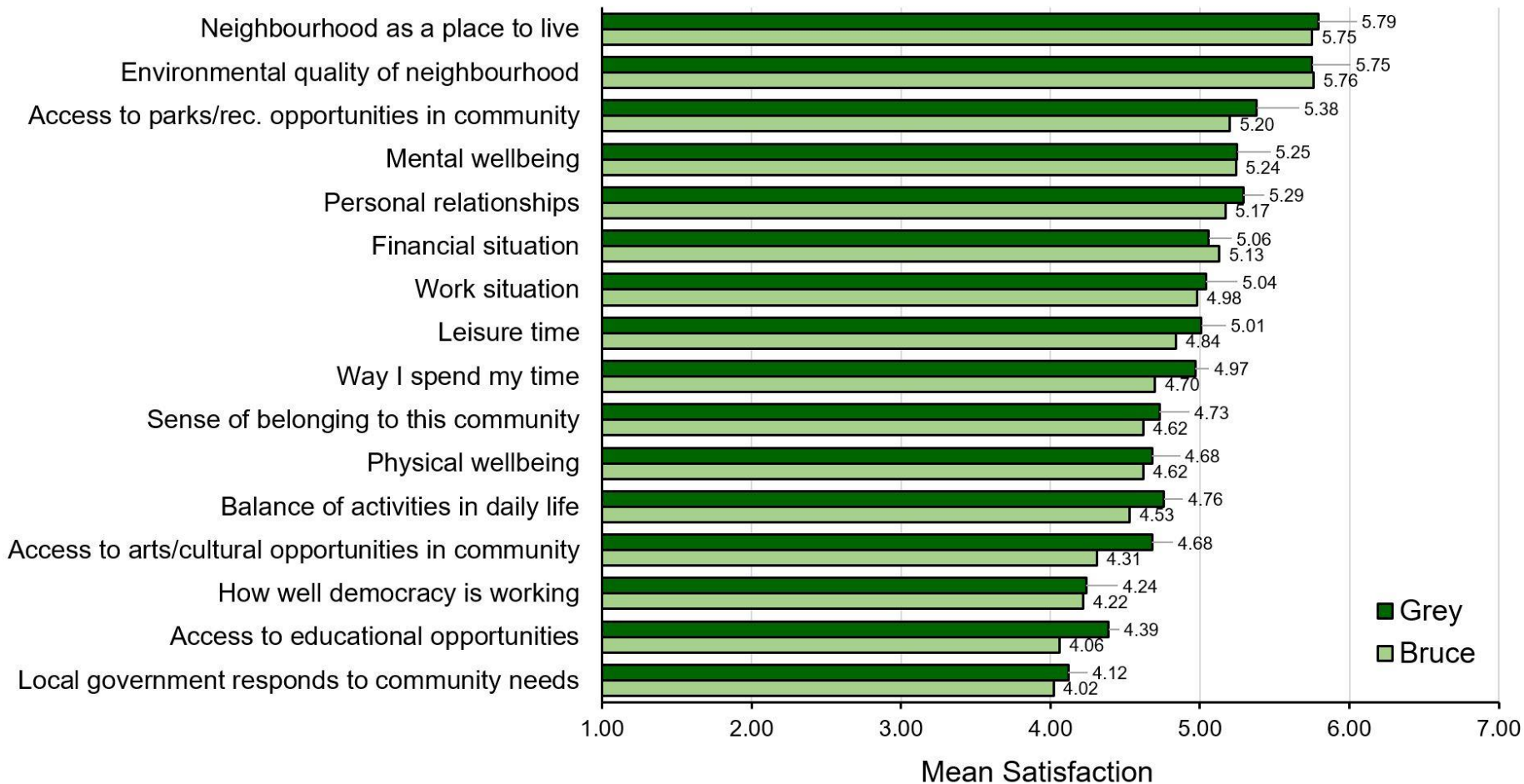
# Aspects of Wellbeing in Bruce and Grey Counties

## Satisfaction with Aspects of Wellbeing



# Aspects of Wellbeing in Bruce and Grey Counties

## Satisfaction with Aspects of Wellbeing



# Characteristics of wellbeing in Bruce and Grey

What characterises residents with higher or lower wellbeing?

## *Below* average wellbeing

- ✓ Women
- ✓ Younger
- ✓ Lower incomes
- ✓ More often unemployed
- ✓ Living with a disability
- ✓ More spend over 30% of income on housing

## *Above* average wellbeing

- ✓ Men
- ✓ Older
- ✓ Married (*not* common-law)
- ✓ Higher incomes
- ✓ More highly educated
- ✓ Longer time residing in the region



# Characteristics of wellbeing in Bruce and Grey

What characterises residents with higher or lower wellbeing?

- ✓ Living Standards
- ✓ Community Vitality
- ✓ Democratic Engagement
- ✓ Education
- ✓ Environment
- ✓ Healthy Populations
- ✓ Leisure and Culture
- ✓ Time Use
- ✓ Overall Wellbeing

*Above* average wellbeing

*Below* average wellbeing

