

June 28, 2022



PRESENTED BY:
Deborah Wadsworth, Kasian Architecture



Task Force Presentation
Durham, Ontario

Rockwood Terrace Campus of Care

OUR TEAM

Your dedicated project team,
providing day-to-day contact:

Kasian + THA
LTC & Healthcare Teams

35+ years in
Healthcare and LTC

Dr. Armstrong, LTC
Research Expert



YOUR TEAM

Grey County +
Rockwood Terrace

Colliers Project Leaders

Cost Consultant, Geotechnical,
Land Surveyor, Testing Agencies,
Environmental, Archaeologist,
Noise & Vibration
Consultant

THE TEAM

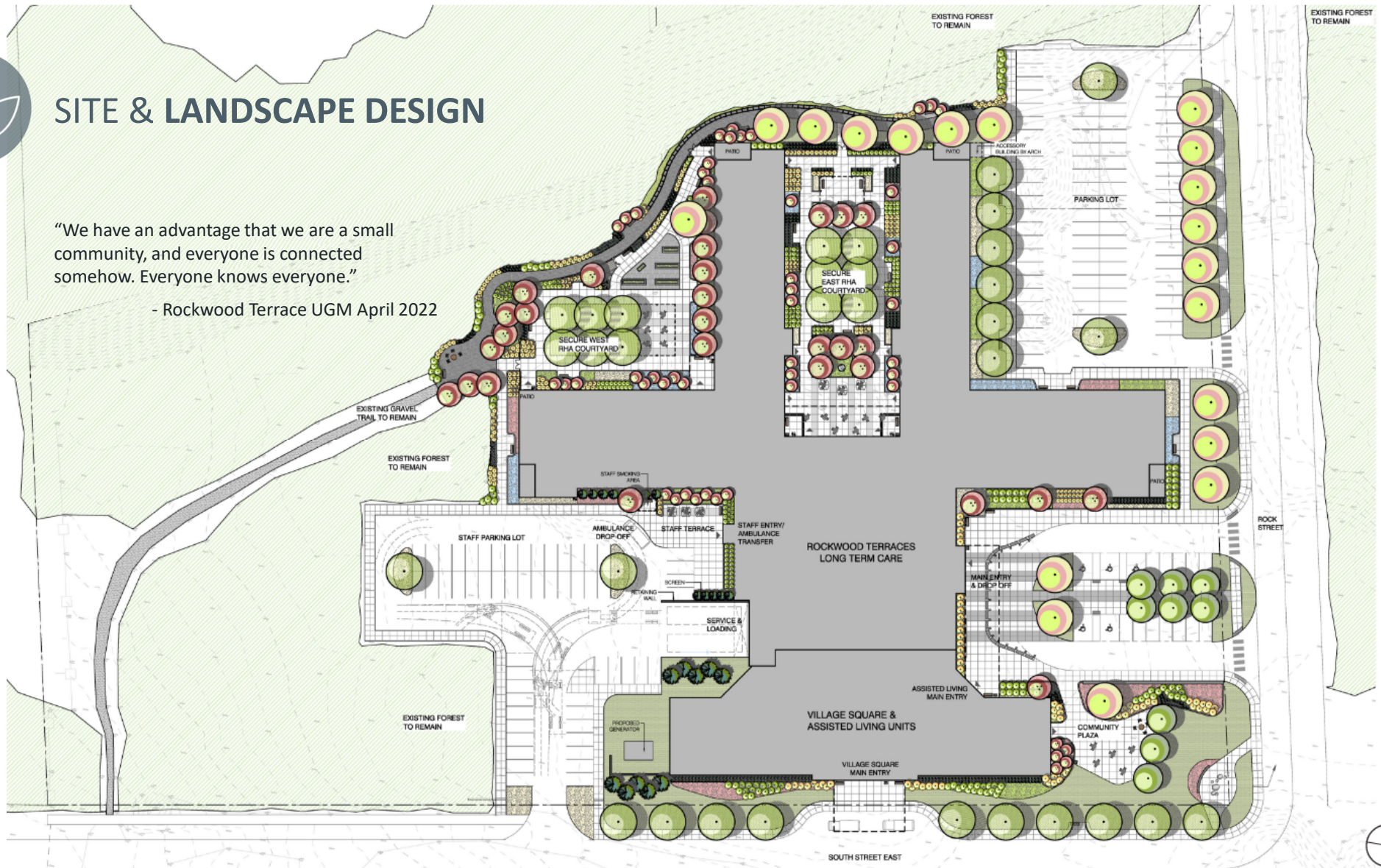
Working together towards a common goal



SITE & LANDSCAPE DESIGN

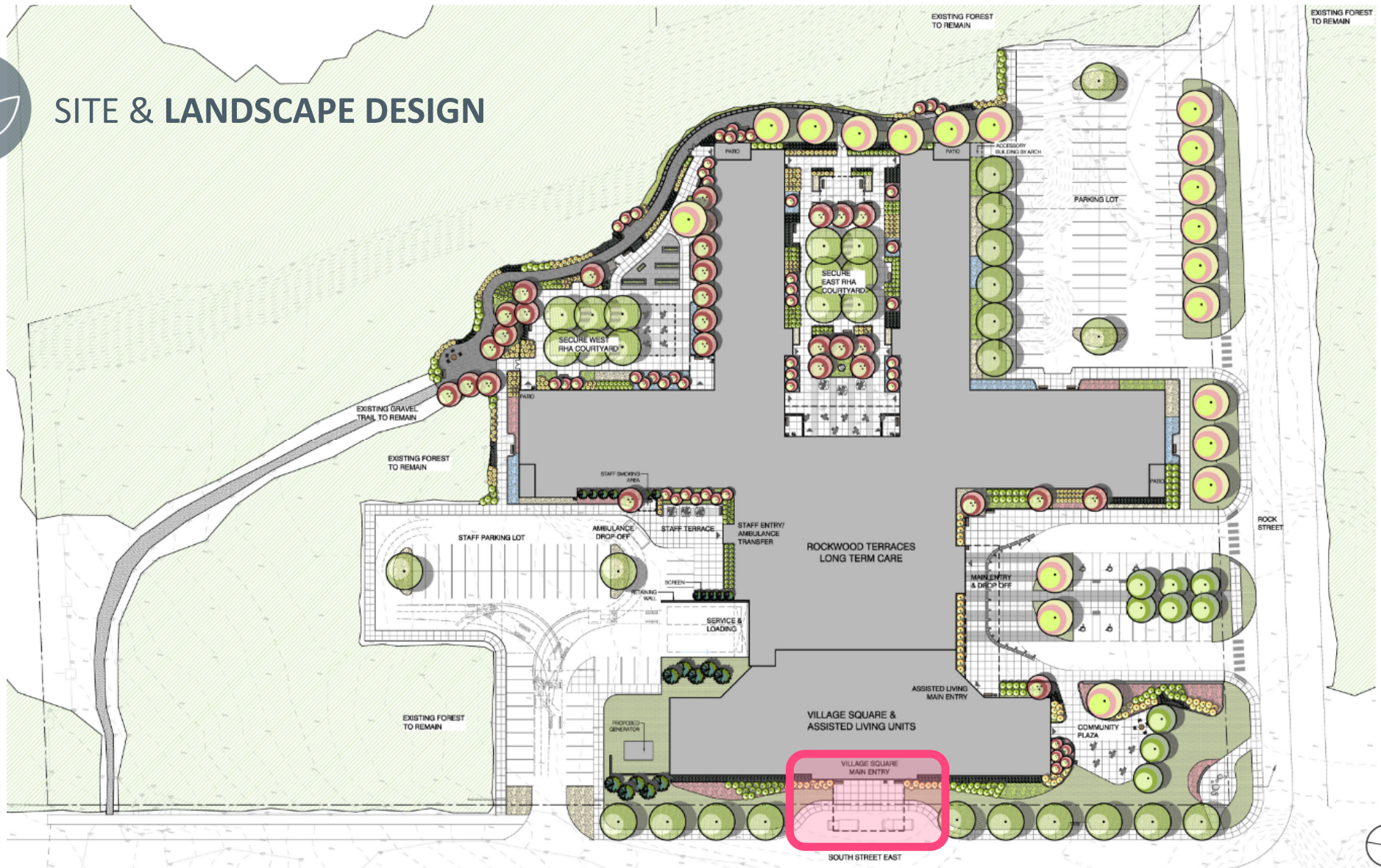
“We have an advantage that we are a small community, and everyone is connected somehow. Everyone knows everyone.”

- Rockwood Terrace UGM April 2022





SITE & LANDSCAPE DESIGN

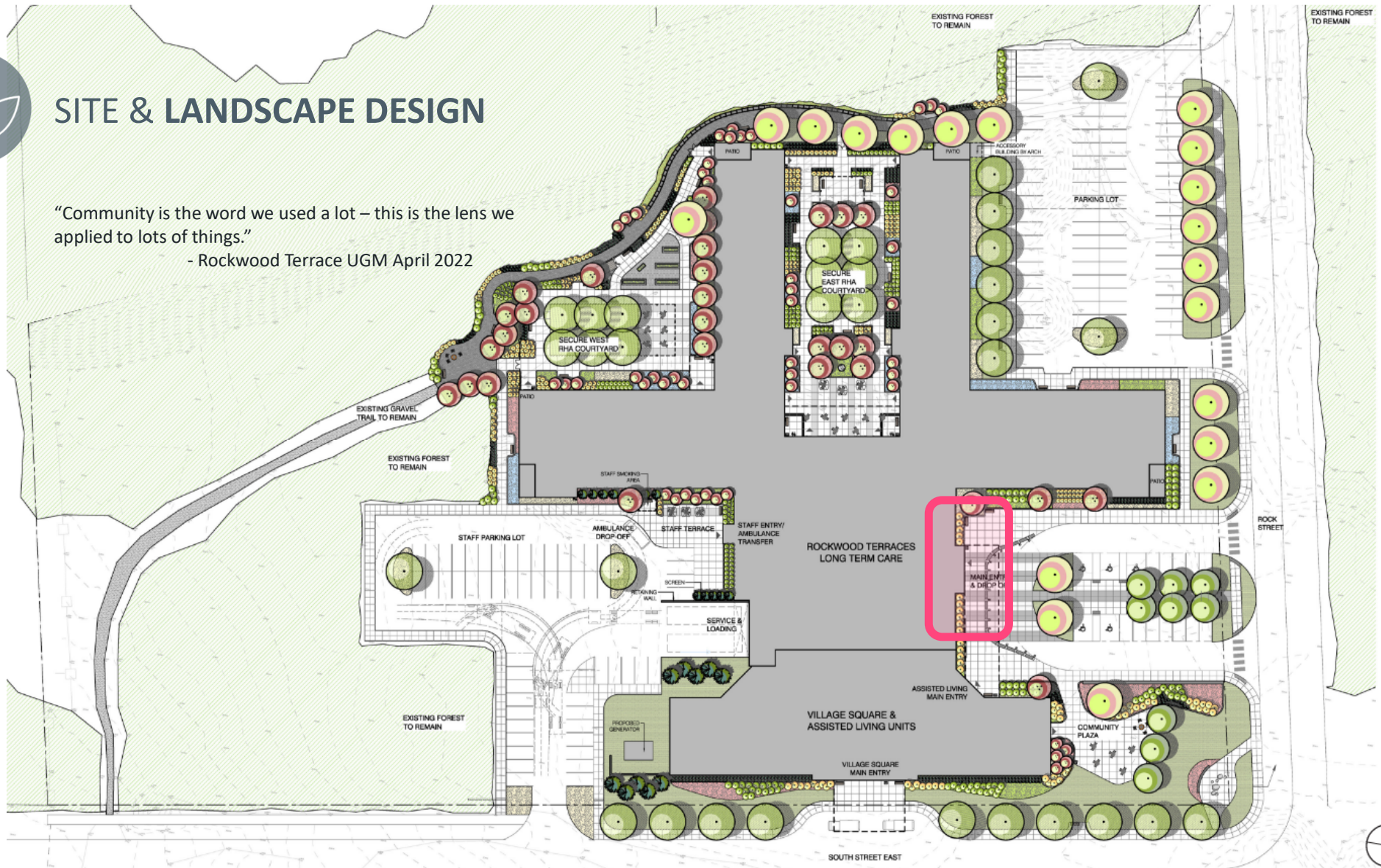




SITE & LANDSCAPE DESIGN

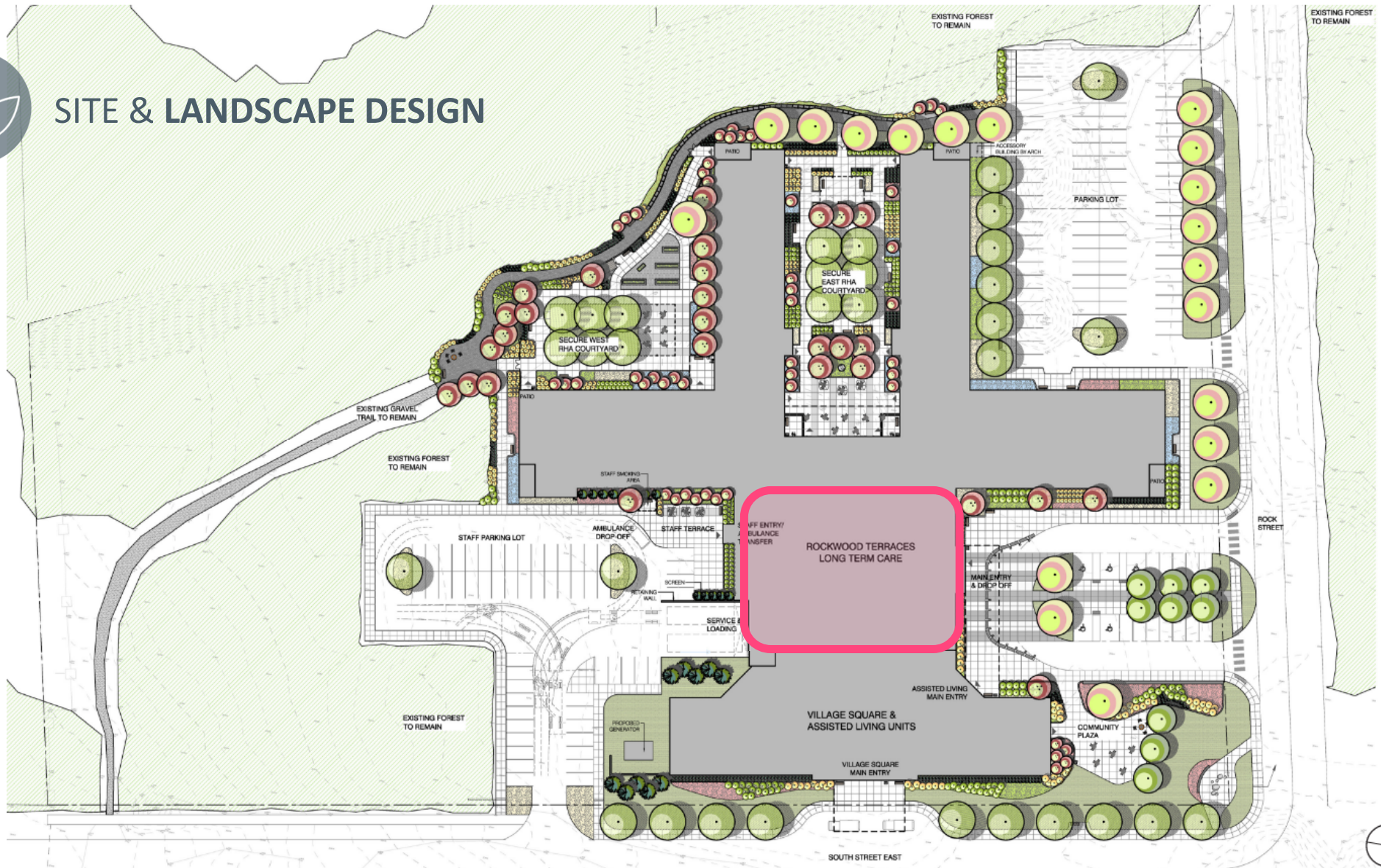
“Community is the word we used a lot – this is the lens we applied to lots of things.”

- Rockwood Terrace UGM April 2022



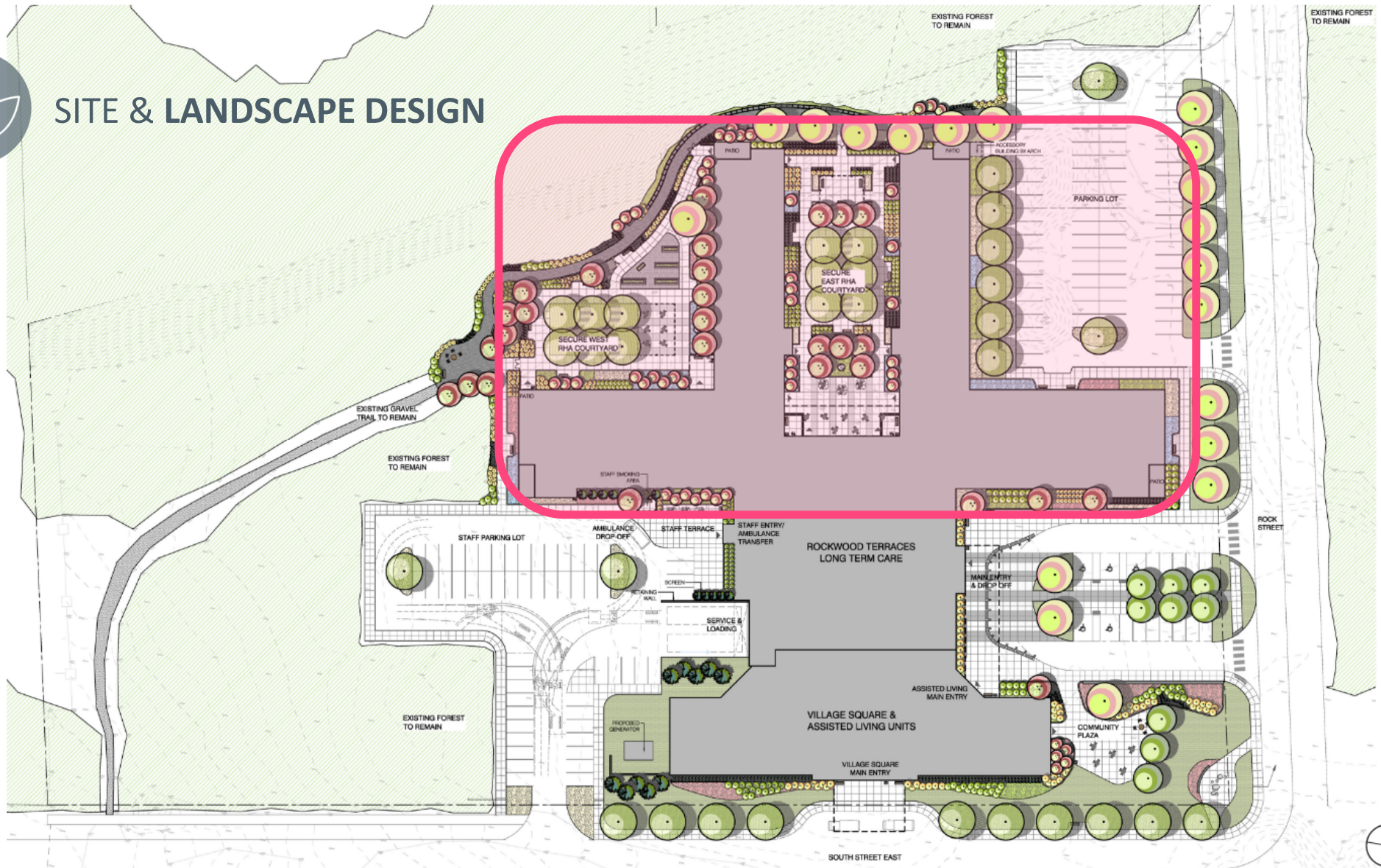


SITE & LANDSCAPE DESIGN





SITE & LANDSCAPE DESIGN

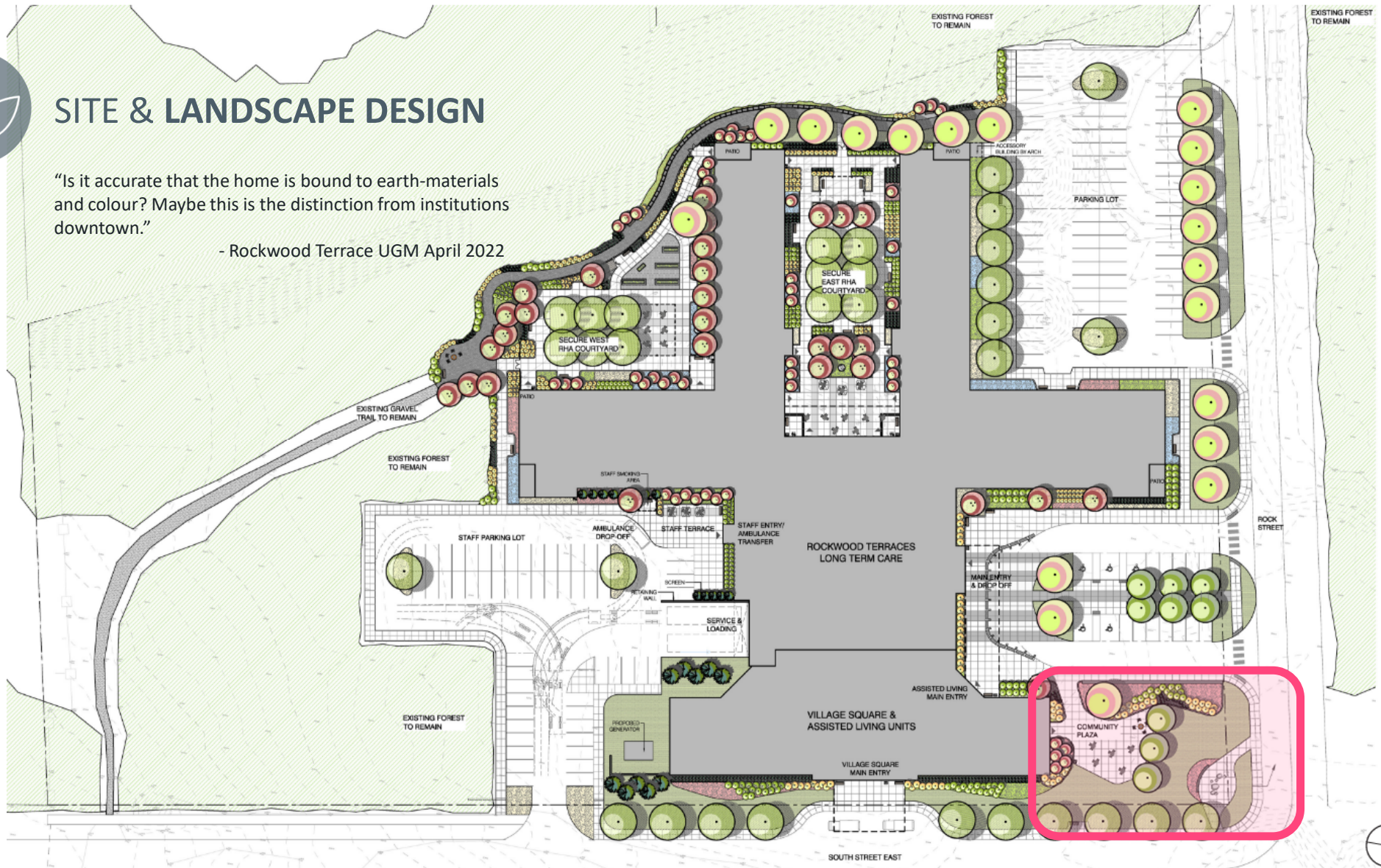




SITE & LANDSCAPE DESIGN

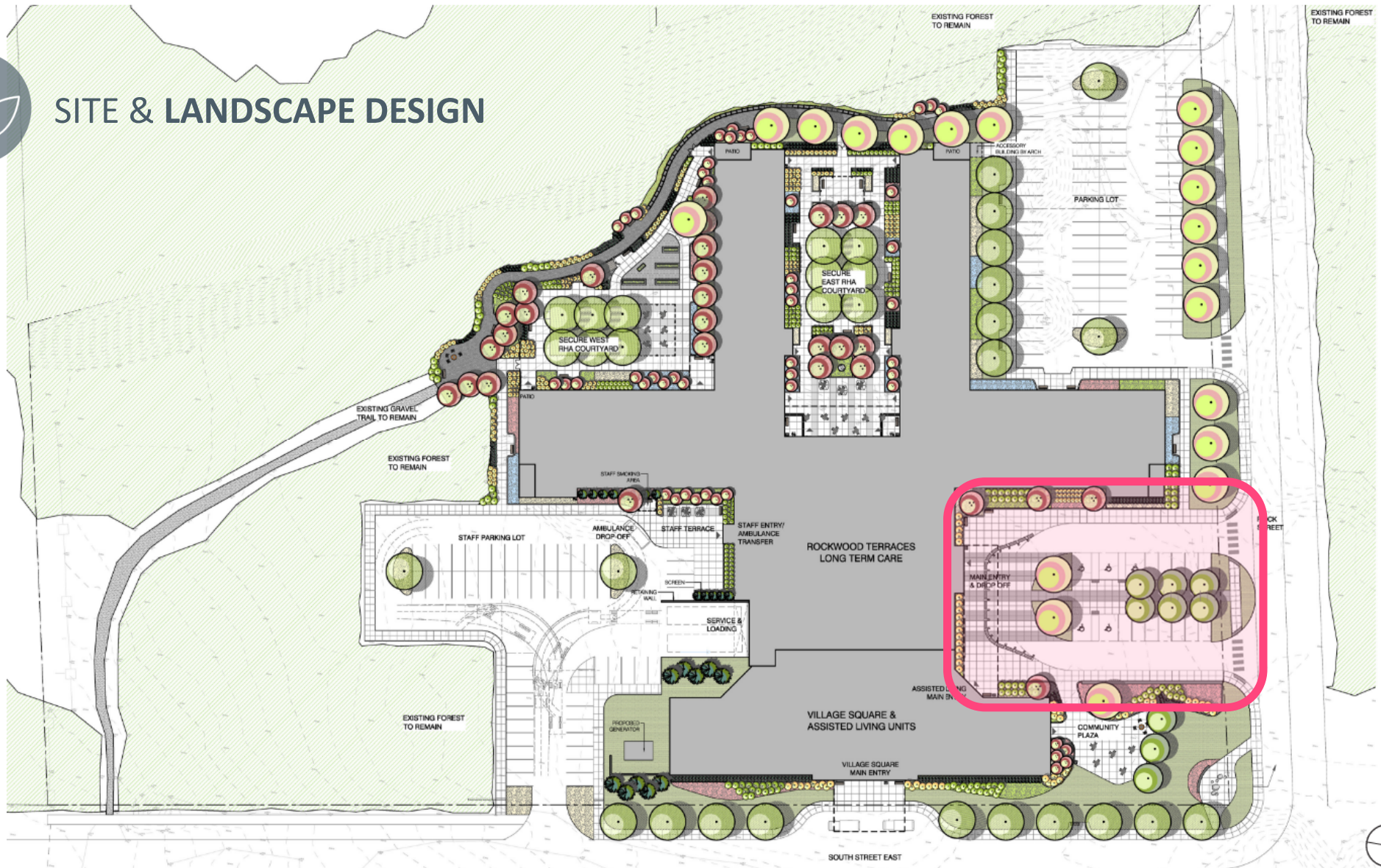
“Is it accurate that the home is bound to earth-materials and colour? Maybe this is the distinction from institutions downtown.”

- Rockwood Terrace UGM April 2022



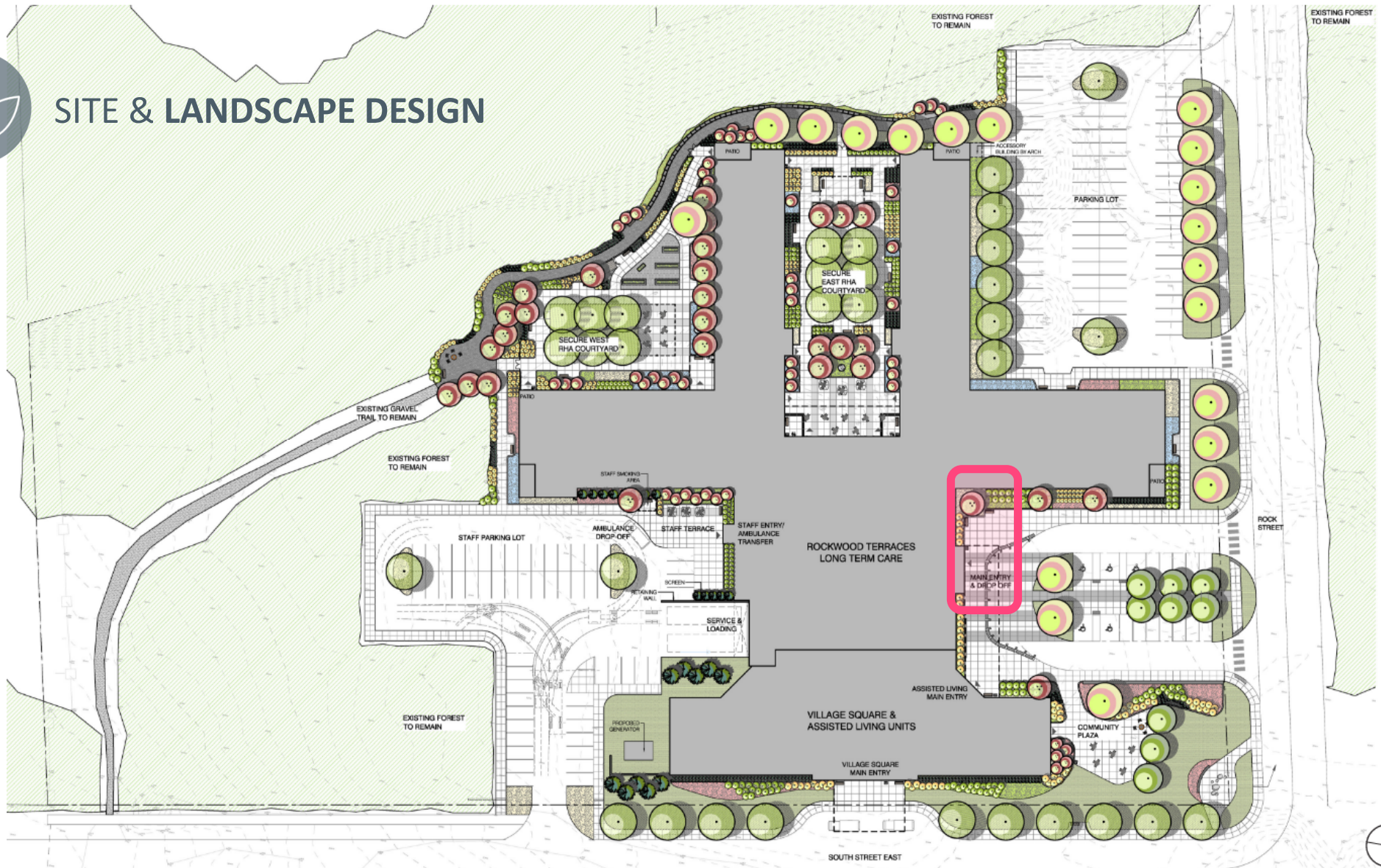


SITE & LANDSCAPE DESIGN



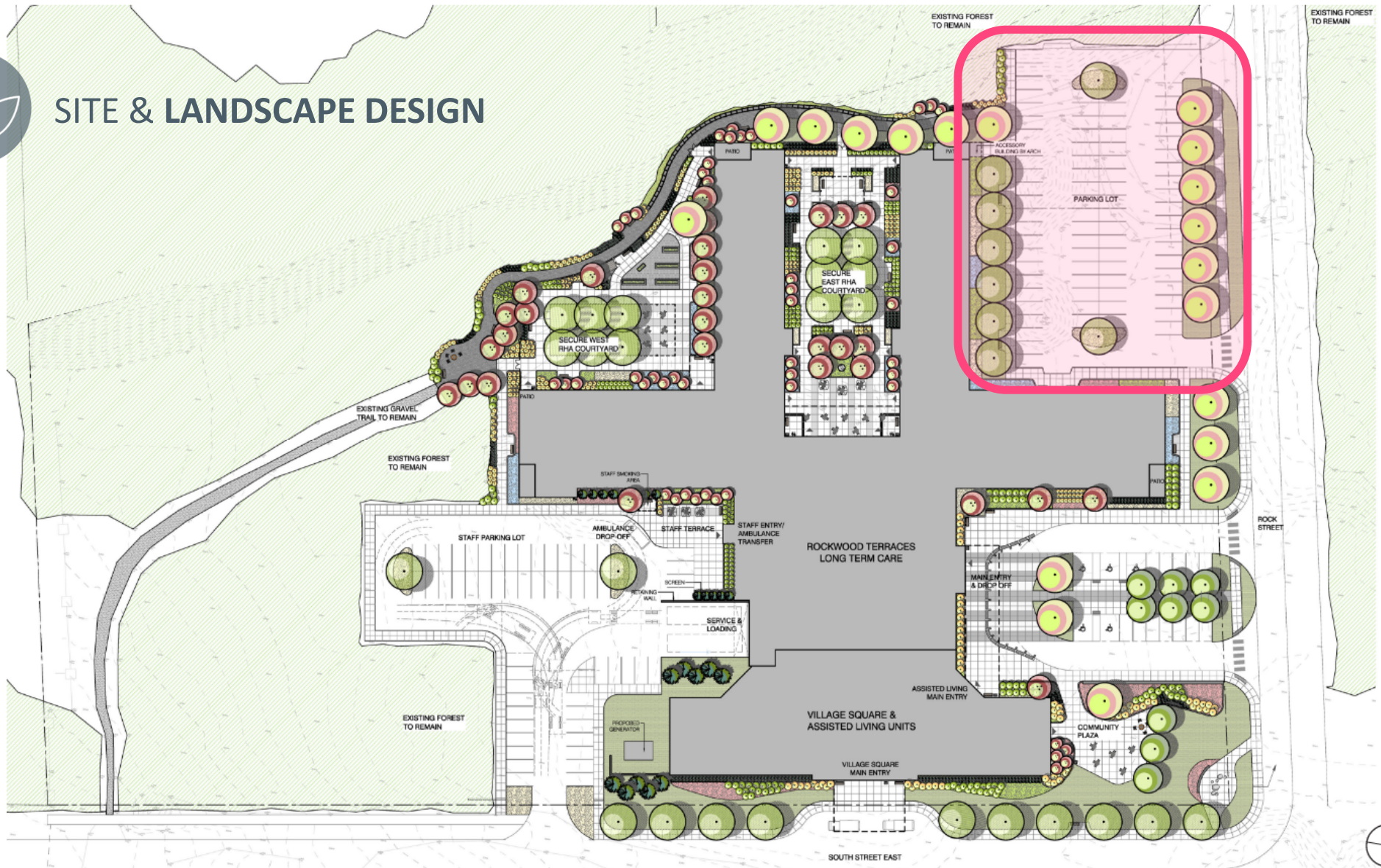


SITE & LANDSCAPE DESIGN



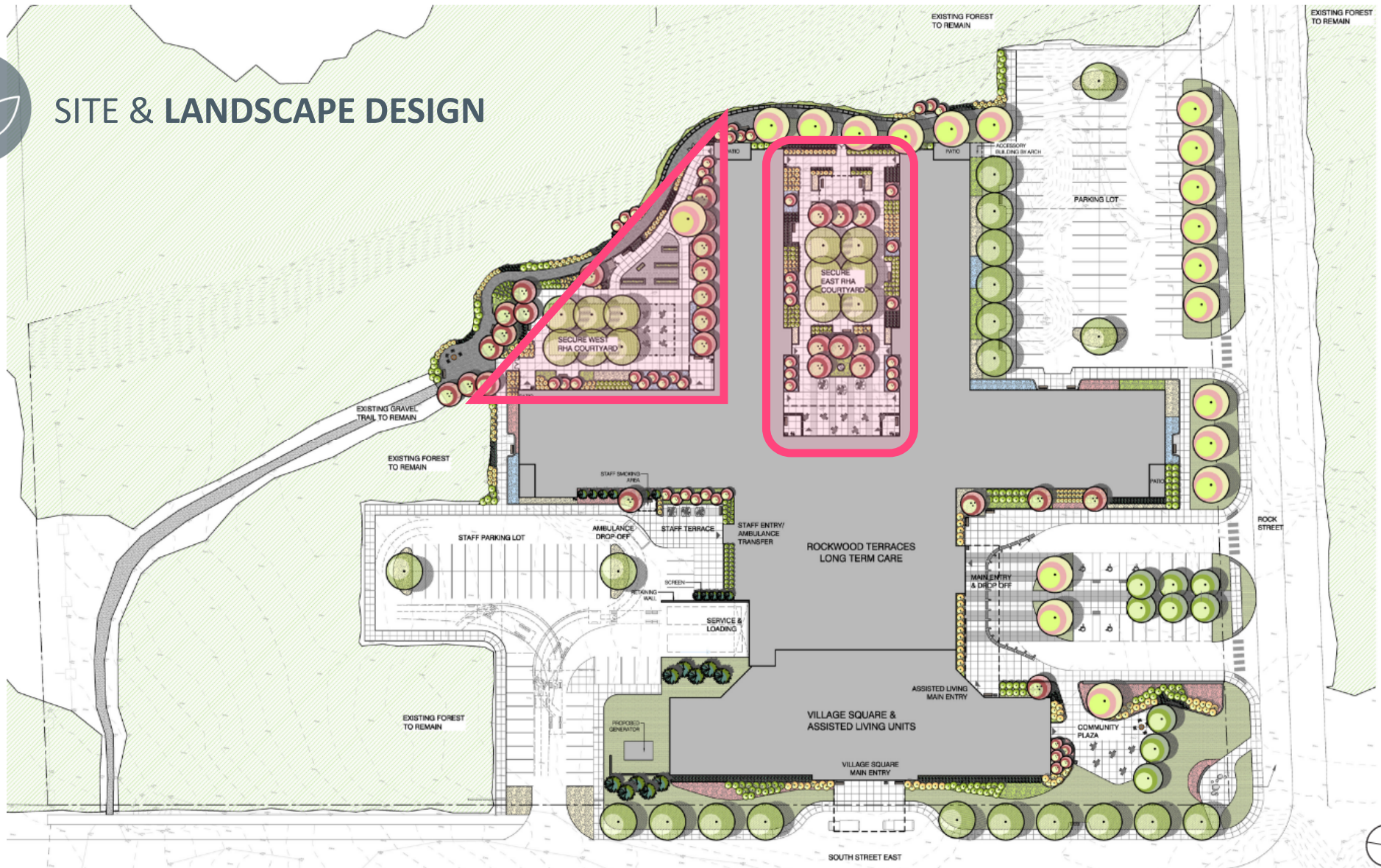


SITE & LANDSCAPE DESIGN



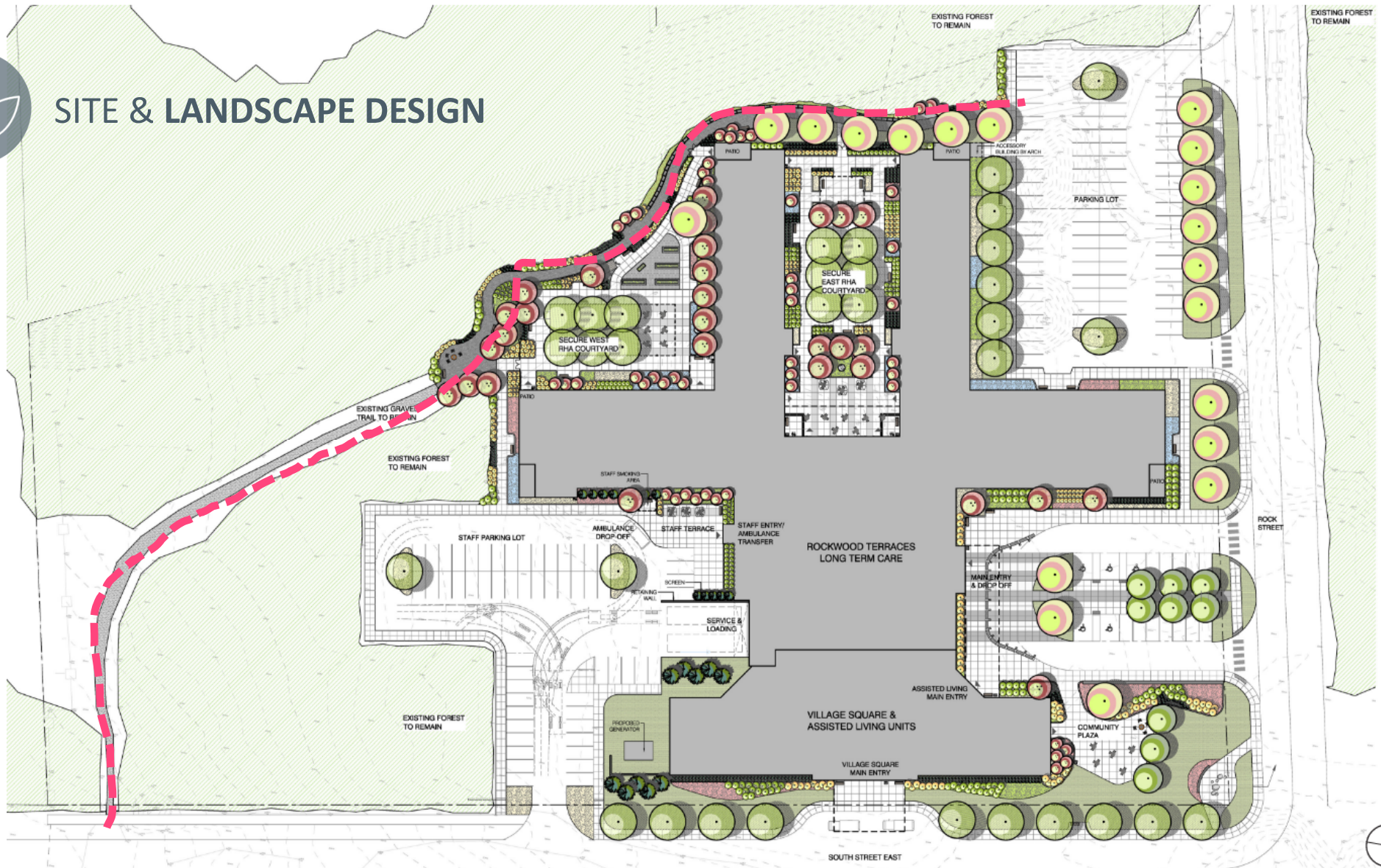


SITE & LANDSCAPE DESIGN



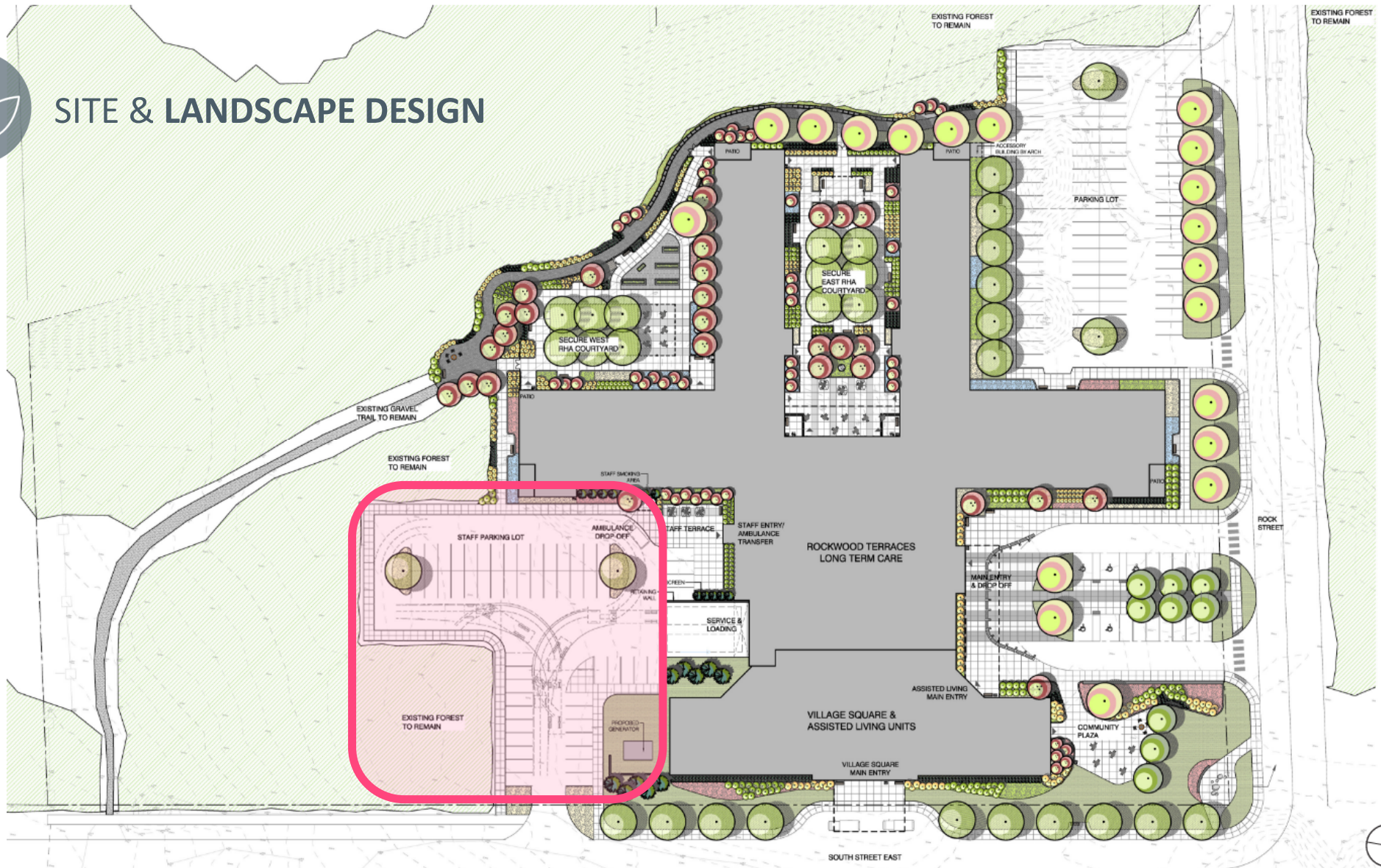


SITE & LANDSCAPE DESIGN





SITE & LANDSCAPE DESIGN

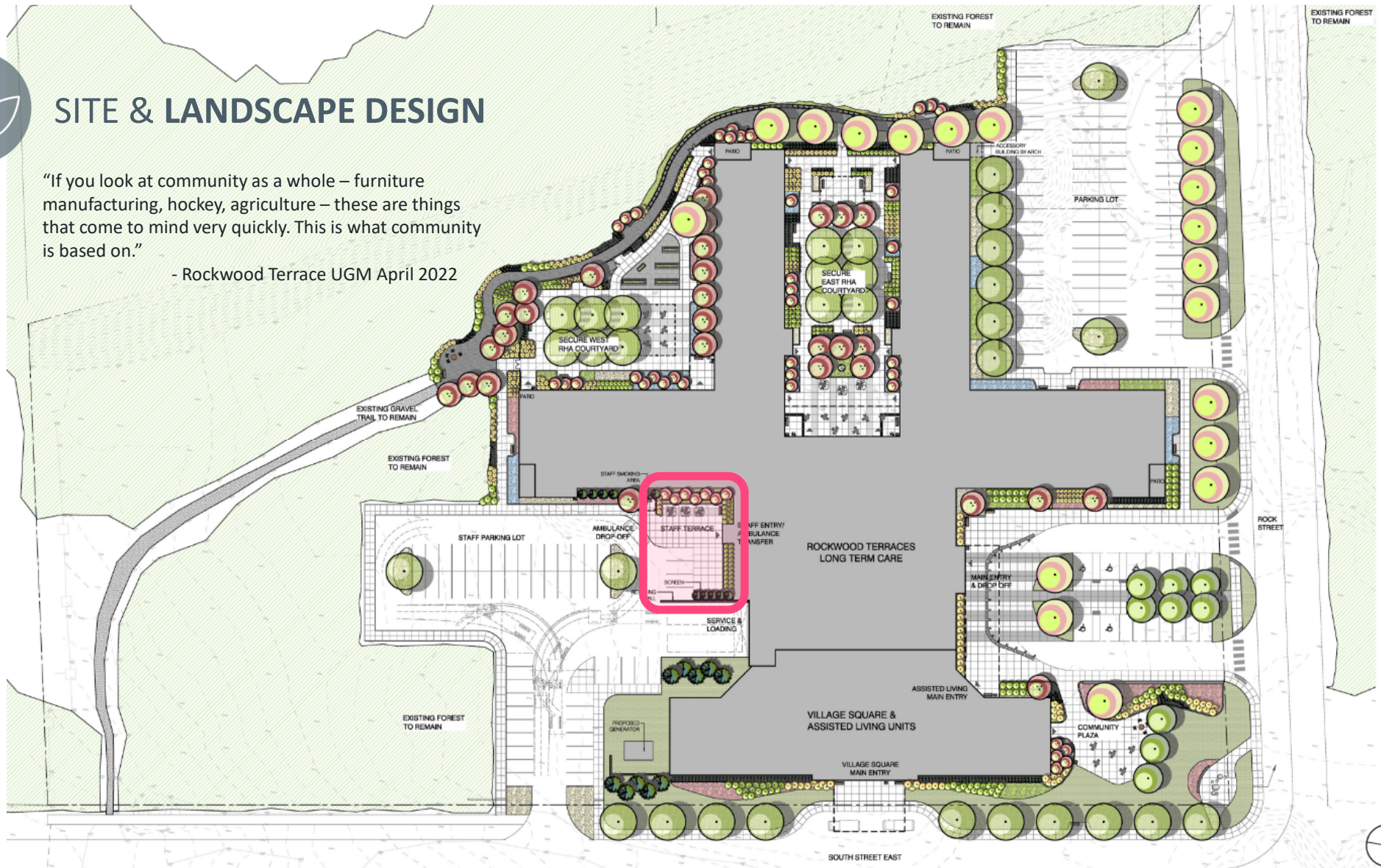




SITE & LANDSCAPE DESIGN

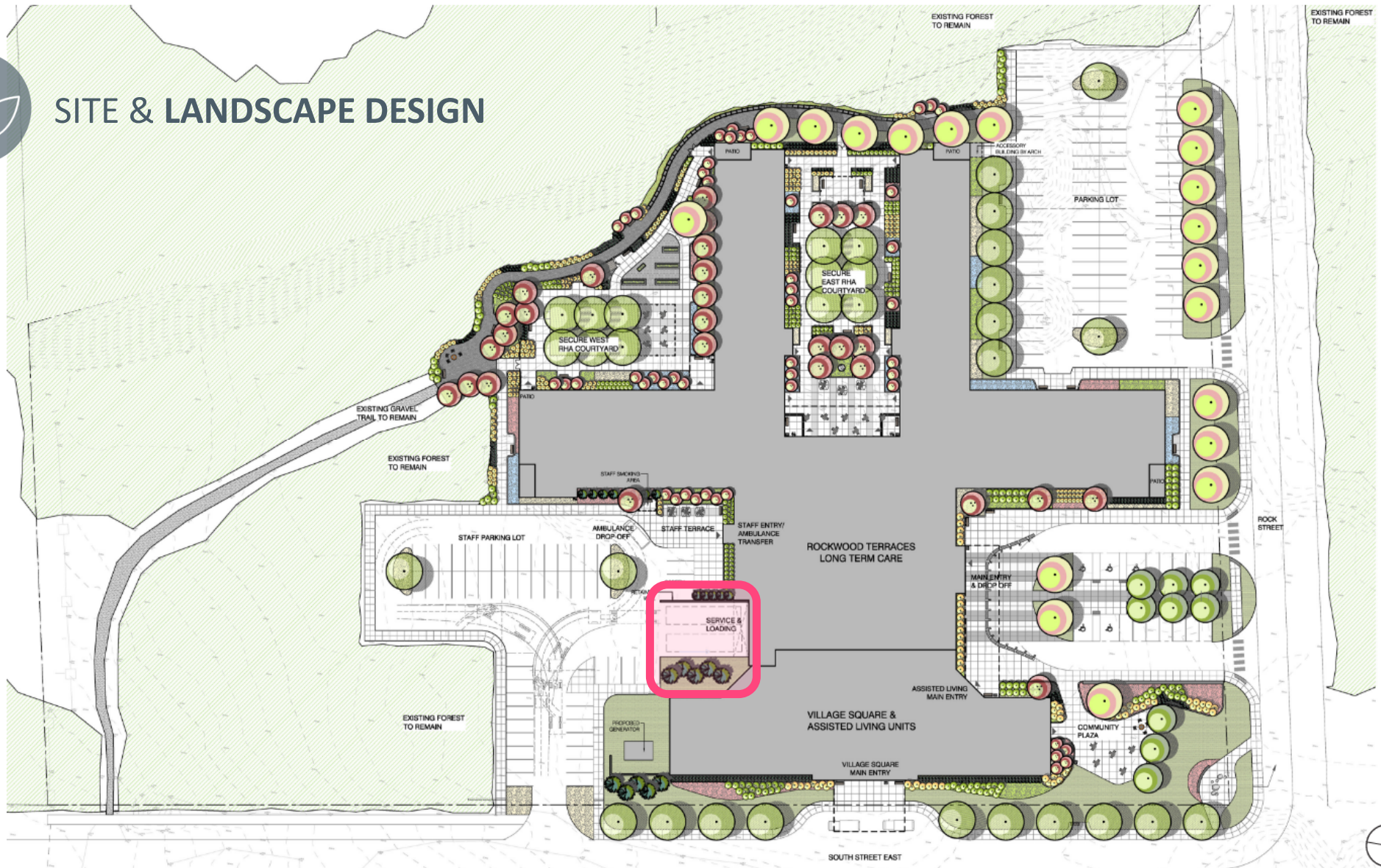
"If you look at community as a whole – furniture manufacturing, hockey, agriculture – these are things that come to mind very quickly. This is what community is based on."

- Rockwood Terrace UGM April 2022



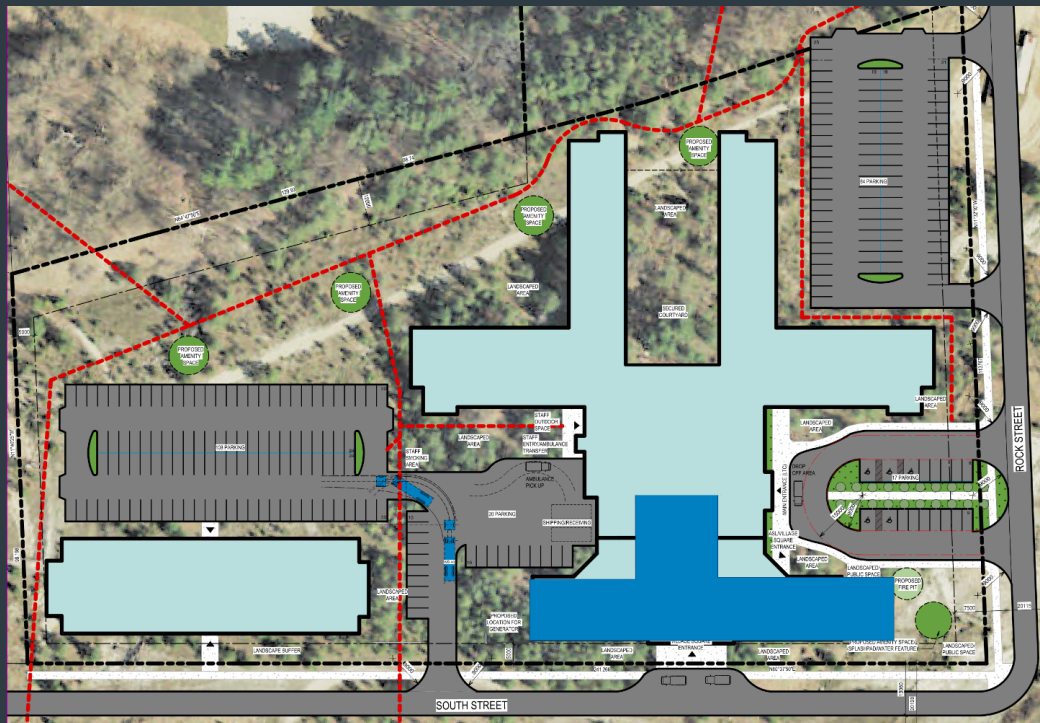


SITE & LANDSCAPE DESIGN



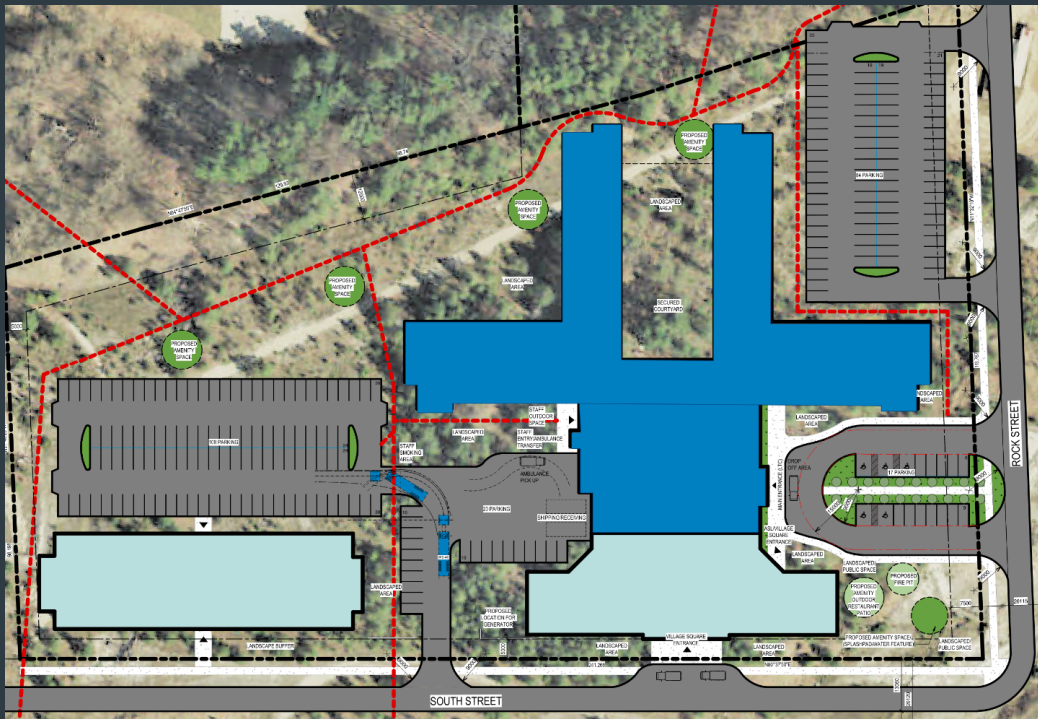
ASSISTED LIVING

Above Village Square



- **40 units** over 2 storeys above the Village Square
- **Synergies** and efficiencies with LTC core, food services, laundry, materials management
- **Village Square connection** for convenience and socializing

Above LTC



- **40 units** over 1 storey above the LTC
- **Synergies** and efficiencies with LTC core, food services, laundry, materials management
- **Village Square connection** for convenience and socializing



CULTURE CHANGE **MOVEMENT**

Since the mid-1980's there has been a **“culture change”** movement with the goal to transform nursing homes from institutions to **person-centred homes**.

This concept underpins the design for the Rockwood Terrace LTC.

CAMPUS OF CARE GROUND FLOOR



“Colour It Your Way is what this describes – people individually trying to find joy.”

- Rockwood Terrace UGM April 2022

CAMPUS OF CARE VILLAGE SQUARE

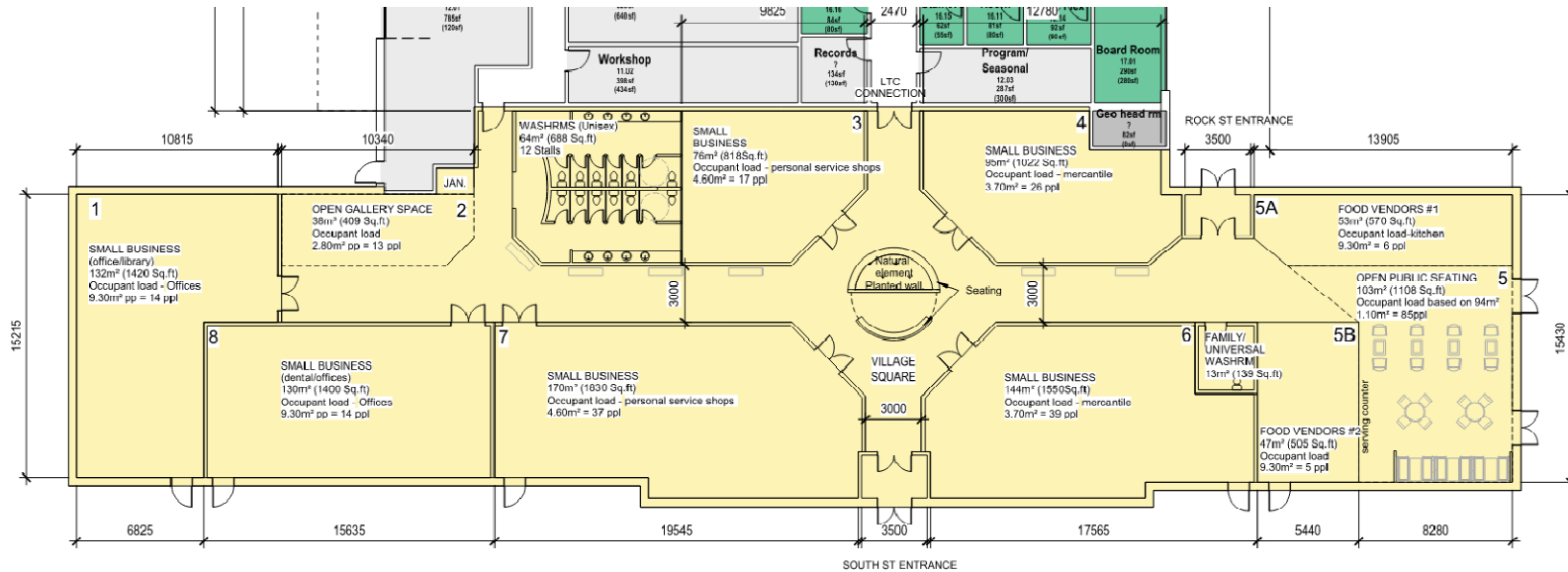


“We have to apply the ColourIt lens to make sure everyone feels welcomed and that they have purpose there. ColourIt has to be for the whole building.”

- Rockwood Terrace UGM June 2022

CAMPUS OF CARE

VILLAGE SQUARE



GROUND



CAMPUS OF CARE

LONG-TERM CARE

GROUND



“Increased desire to live a life worth living that has purpose.”

- Rockwood Terrace UGM April 2022

GROUND



GROUND

- Rockwood Terrace UGM April 2022



CAMPUS OF CARE

LONG-TERM CARE

GROUND



GROUND



- Rockwood Terrace UGM April 2022

CAMPUS OF CARE

LONG-TERM CARE

GROUND



GROUND

- Rockwood Terrace UGM April 2022



CAMPUS OF CARE

LONG-TERM CARE

GROUND



“... open, homey, accessible, and welcoming... these things have to be part of every part of this place. It’s the authenticity... that we’re trying to create *and* maintain.”

- Rockwood Terrace UGM June 2022

GROUND



- Rockwood Terrace UGM June 2022

CAMPUS OF CARE

LONG-TERM CARE

GROUND



CAMPUS OF CARE ASSISTED LIVING

GROUND



CAMPUS OF CARE

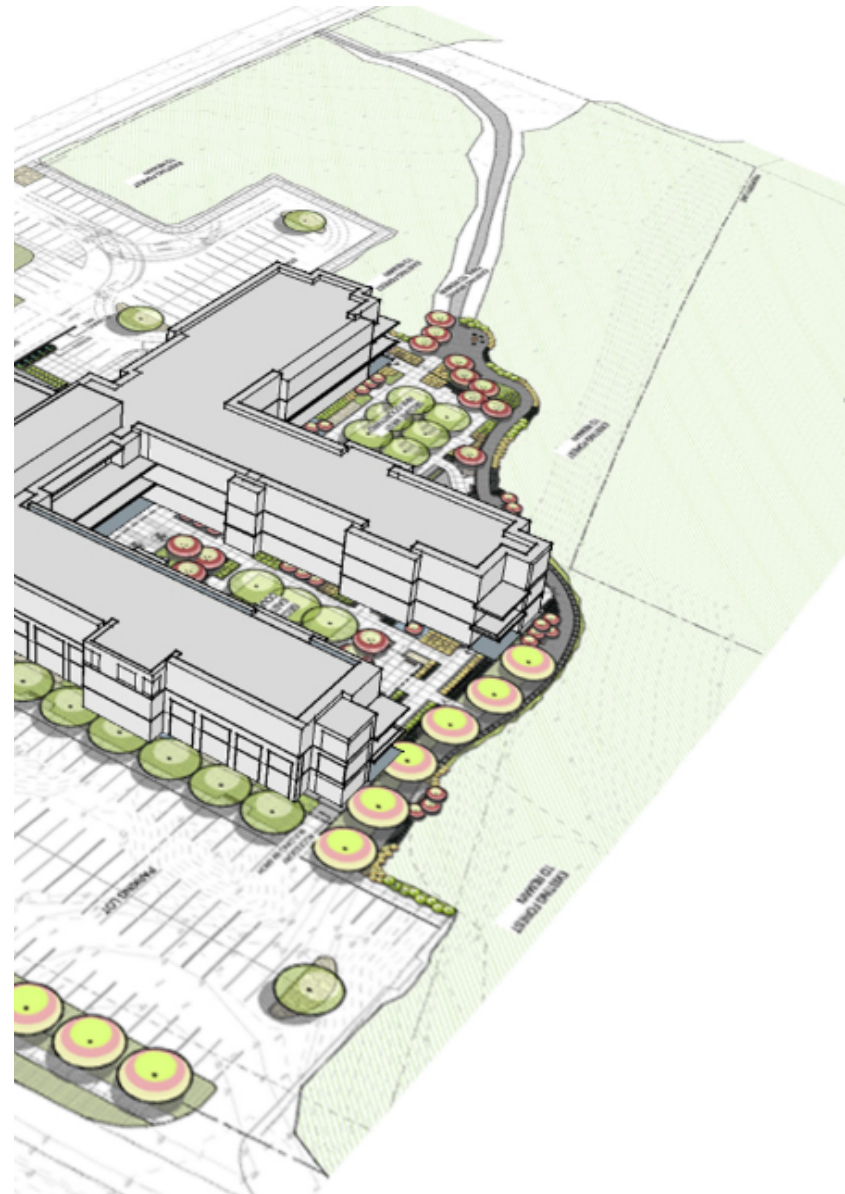
ASSISTED LIVING

LEVEL 3



“The core themes fit well with the vision for Grey County’s strategic plan: To be a place where people feel generally at home and naturally inspired, enjoy a blend of active healthy living and economic opportunity. The whole sense of (the campus of care) feeling like a home, and the natural elements that we can connect and integrated into the site all aligns with the overall vision for the County.”

- Rockwood Terrace UGM June 2022



Thank you