

2017 Construction and Resurfacing

Road Construction and Resurfacing

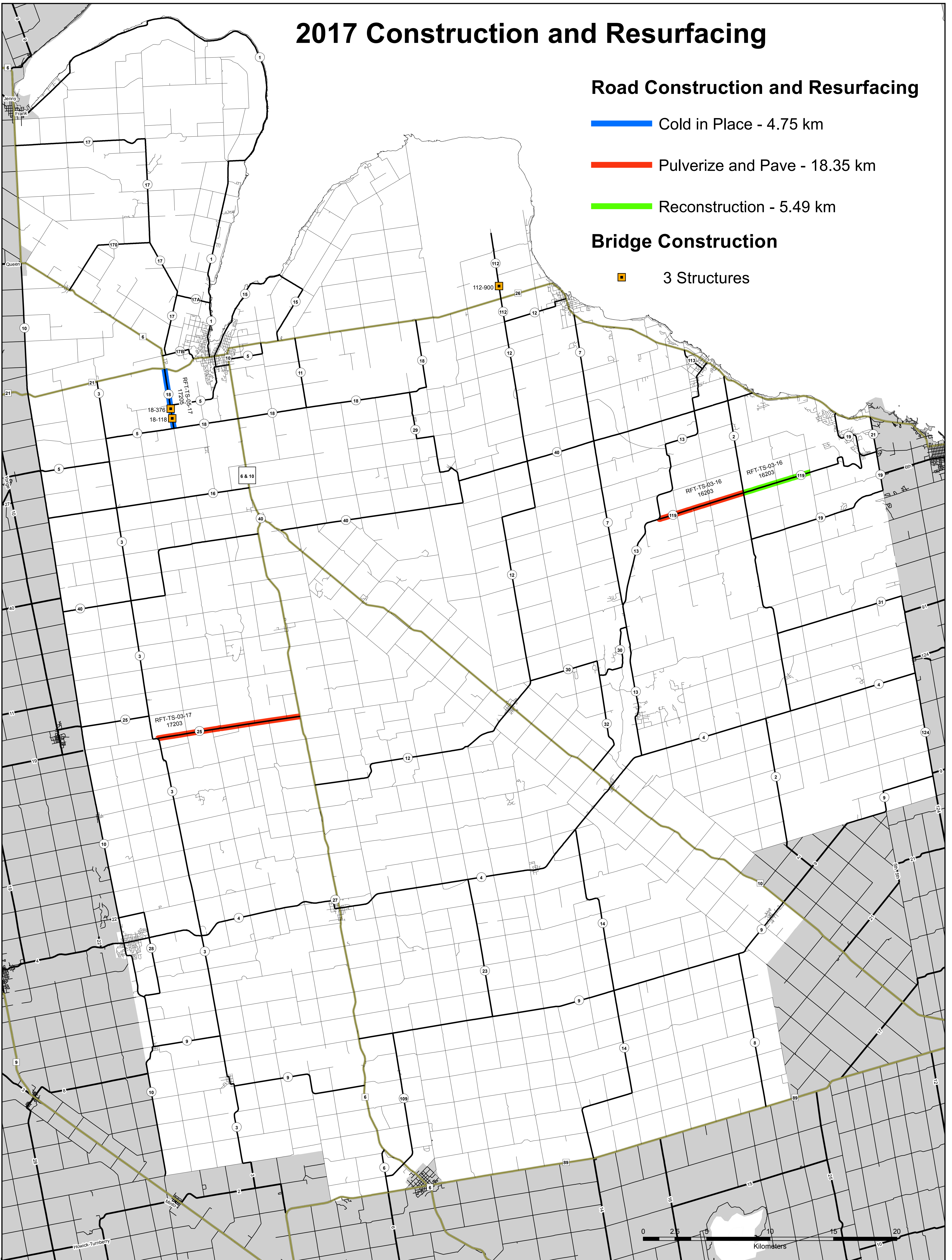
— Cold in Place - 4.75 km

— Pulverize and Pave - 18.35 km

— Reconstruction - 5.49 km

Bridge Construction

■ 3 Structures

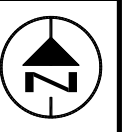


Coordinate System: NAD 1983 UTM Zone 17N
Units: Meter

REVISIONS	INTERNAL	DESCRIPTION
No.	DATE	
1	02/11/16	INTERNAL



2017
CONSTRUCTION



SHEET

1 OF 1