



Committee Report

To:	Warden McQueen and Members of Grey County Council
Committee Date:	September 24, 2020
Subject / Report No:	TR-CW-17-20
Title:	Amendments to By-Law 4788-13 – Regulating Traffic and Parking within the County of Grey Roads System
Prepared by:	Matt Marck, Engineering Manager
Reviewed by:	Pat Hoy, Director of Transportation Services
Lower Tier(s) Affected:	Member Municipalities
Status:	Recommendation adopted by Committee as presented per Resolution CW168-20; Endorsed by County Council October 8, 2020 per Resolution CC78-20;

Recommendation

1. That Report TR-CW-17-20 be received and that Schedules “N”, “O”, “P” and “U” of By-Law 4788-13 being the By-law to regulate traffic and parking on Grey County roads be amended to reflect the proposed revisions.

Executive Summary

By-Law 4788-13 was adopted by Grey County Council to regulate traffic and parking on roads under the jurisdiction of the County of Grey.

The By-Law includes twenty-one schedules that identify a variety of restrictions and associated fines, with changes reviewed and/or proposed to several schedules as follows:

Schedule	Description	Changes Requested	Recommended
N	Rates of Speed	<u>Grey Road 4 West Grey</u> Extend existing posted 70 km/h leaving Durham to the east (bylaw for existing posted does not exist) – NEW	Yes
		<u>Grey Road 4 Grey Highlands</u> Change existing 60 km/h speed limit to 50 km/h through the Hamlet of Ceylon – REVISION	Yes
		<u>Grey Road 13 Grey Highlands</u> Reduction of existing speed posting of 50 km/h to 40 km/h through Eugenia – REVISION	Yes

Schedule	Description	Changes Requested	Recommended
		<u>Grey Road 18 Meaford</u> Reduction of existing speed posting of 80 km/h to 70 km/h between Concession 10 and Grey Road 11 – NEW	No
		<u>Grey Road 29 Chatsworth</u> Extend 50 km/h zone leaving Walters Falls by 210 metres to the southeast - REVISION	Yes
O	Rates of Speed in School Zones for Restricted Times	<u>Grey Road 109 Southgate</u> Addition of school speed zone south of Holstein - NEW	Yes
P	Community Safety Zones	<u>Grey Road 29 Chatsworth (Walters Falls)</u> Extend Community Safety Zone southeast as per proposed 50 km/h zone - REVISION	Yes
U	No Parking Where Signs Posted	<u>Grey Road 1 Georgian Bluffs</u> Bruce's Caves - NEW	Yes
		<u>Grey Road 2 Blue Mountains</u> Kolapore Uplands - NEW	Yes

Background and Discussion

Schedule “N” Rates of Speed

In accordance with the Highway Traffic Act, municipalities have the authority to establish rates of speed on their roads. For the speed limit rates to be applicable, a by-law must be passed identifying the limits and the rate of speed.

Schedule “N” regulates the rates of speed on County roads that differ from the standard rural (80 kilometres per hour) and urban (50 kilometres per hour) regulatory speeds.

Many requests have been received to lower speed limits. It should be noted the intent of County roads are to serve increased traffic volumes, at higher travel speeds, with reduced interruption. The majority of the requests can be summarized and forwarded to the local police for the consideration of increased enforcement.

Below are the proposed changes.

A resident located on Grey Road 4, west of Durham, raised concerns with speeding and traffic volumes east of Durham. The section of roadway has experienced an increase in the number of entrances due to residential development. A 500 m portion of this section is already posted at 70 km/h, but no by-law was created to enforce it. Transportation Services agrees that the existing 80 kilometres per hour should be posted at 70 kilometres per hour from the east limits of Durham, easterly to the west junction of Concession 2 (1.66 kilometres). Transportation Services recommends the following revision to Schedule “N” of By-Law 4788-13.

Grey Road	From	To	Rate of Speed
4	East Limit of Durham	West Junction of West Grey Concession 2	70 km/h

A resident located on Grey Road 4, Ceylon, raised concerns with speeding and traffic volumes. The section of roadway (975 metres) is posted at 60 kilometres per hour. Transportation Services agrees that the existing 60 kilometres per hour should be posted at 50 kilometres per hour to align with other urbanized Hamlets. Transportation Services recommends the following revision to Schedule “N” of By-Law 4788-13.

Grey Road	From	To	Rate of Speed
4	A point 200 metres east of the intersection of Grey Road No. 4 and Baseline at Wilcox Lake Road (Ceylon)	A point 1175 metres east of the intersection of Grey Road No. 4 and Baseline at Wilcox Lake Road (Ceylon)	50 km/h

The Municipality of Grey Highlands wishes to have the regulatory speed of 50 kilometres per hour reduced to 40 kilometres per hour in the Hamlets of Eugenia and Kimberly. At this time, Eugenia is being proposed to have a speed reduction and Kimberly is going to receive select traffic calming measures. Transportation Services would like to collect data from both hamlets to evaluate which strategy is more effective and propose policy changes based on the findings. Transportation Services recommends the following revision to Schedule “N” of By-Law 4788-13.

Grey Road	From	To	Rate of Speed
13	110 metres south of Raglan Street	210 metres north of North Street	40 km/h

A resident located on Grey Road 18, east of Concession 10, raised concerns with speeding. This section of roadway has a higher than average number of residential entrances due to residential development, but sightlines and geometrics are satisfactory to support the existing 80 km/h posting. Transportation Services believes that the existing 80 kilometres per hour posting from Concession 10 easterly to Grey Road 11 (2.7 kilometres) is satisfactory and a reduction is not warranted. Transportation Services does not recommend a revision to Schedule “N” of By-Law 4788-13.

Grey Road	From	To	Rate of Speed
18	Concession 10	Grey Road 11	Remain posted at 80 km/h

It is recommended to extend the existing 50 kilometres per hour speed limit leaving Walters Falls by 210 metres to be in line with a proposed extension of the existing Community Safety Zone to the south. The extension to both would establish a safer environment for residents going to the ball diamonds situated off of Deviation Road.

Grey Road	From	To	Rate of Speed
29	110 metres southeast of Deviation Road	A point 400 metres east of the intersection of Grey Road 29 and Concession 11	50 km/h

Schedule “O” Rates of Speed in School Zones for Restricted Times

The member Municipality has requested an additional location be added to Schedule “O” of By-Law 4788-13.

This location is adjacent to a Mennonite School located south of Holstein on Grey Road 109. Transportation Services recommends that the posted speed limit of 80 kilometres per hour be reduced to 60 kilometres per hour during certain times as noted in the following table.

Grey Road	Location	Effective Time
109	From 150 metres south of Southgate Road 8 to 260 metres north of Southgate Road 8	During school days at times to be determined

Schedule “P” – Community Safety Zones

The public has requested an additional location be added to Schedule “P” due to concerns with speeding.

In accordance with the Highway Traffic Act, municipalities have the authority to establish community safety zones on their roads. For the community safety zones to be applicable, a by-law must be passed identifying the limits. Transportation Services recommends that the following be added to Schedule “P” of By-Law 4788-13.

Grey Road	Location	From	To
29	Community of Walters Falls	A point 85 metres southeast of Deviation Road	A point 420 metres east of the intersection of Concession 11

Schedule “U” – No Parking Where Signs Posted

In accordance with the Highway Traffic Act, municipalities have the authority to establish parking restrictions on their roads. For the parking restriction to be applicable, a by-law must be passed identifying the location of restrictions.

Vehicles parking on both sides of Grey Road 1 in the vicinity of the Bruce’s Caves Conservation Area are causing safety concerns and operational conflicts. It is recommended to make this area “No Parking” location as noted below. Transportation Services recommends the following revision to Schedule “U” of By-Law 4788-13.

Grey Road	Side of Road	From	To
1	Both	100 metres south of the Bruce’s Caves parking lot entrance	Old Mill Road

Vehicles parking on both sides of Grey Road 2 in the vicinity of the Kolapore Uplands parking lot are causing safety concerns and operational conflicts. As an interim safety measure, maintenance staff have already erected ‘no parking’ signs. Transportation Services recommends the following revision to Schedule “U” of By-Law 4788-13.

Grey Road	Side of Road	From	To
2	Both	200 metres south of the Kolapore Uplands parking lot entrance	400 metres north of the Kolapore Uplands parking lot entrance

Legal and Legislated Requirements

For the above locations to be enforceable the By-Law must be consistent with field signage.

Financial and Resource Implications

Labour, material and equipment to manufacture and install/change signage would cost approximately \$10,000.

Relevant Consultation

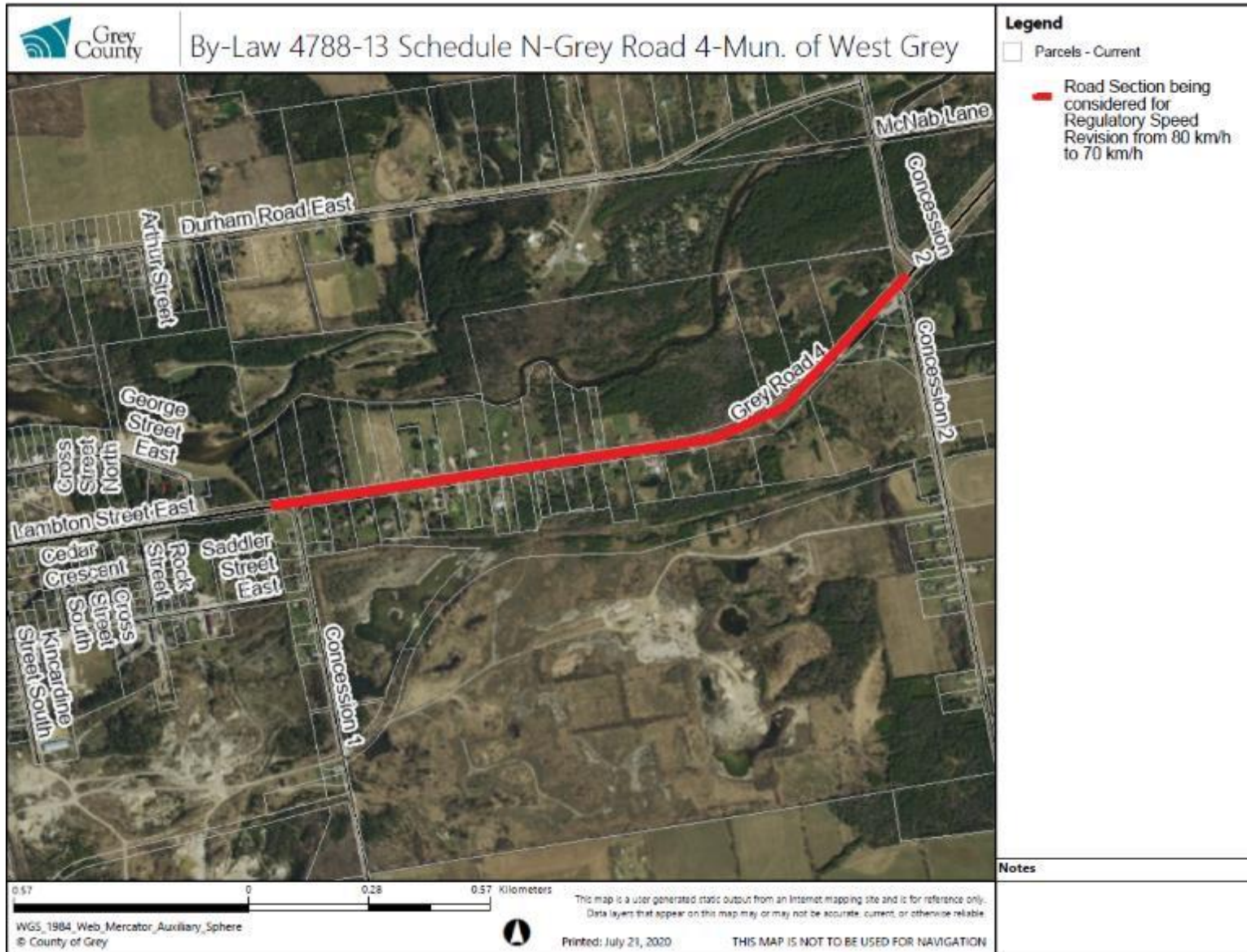
- Internal
Clerks Department

- ☒ External
Township of Chatsworth, Township of Georgian Bluffs, Municipality of Meaford, The Blue Mountains, Municipality of West Grey, Municipality of Grey Highlands, Township of Southgate, Police Services

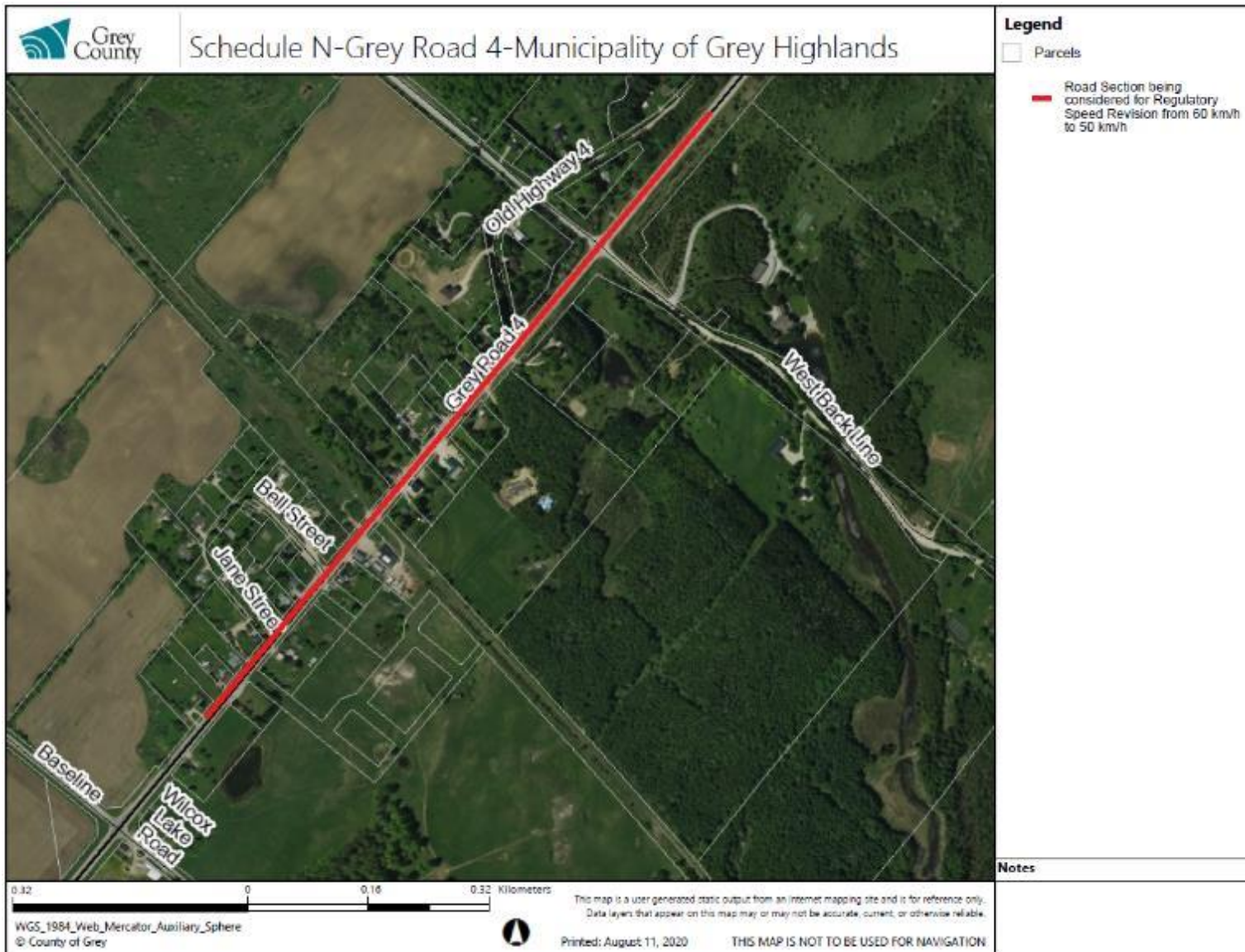
Appendices and Attachments

Grey Road 4 Municipality of West Grey By-Law 4788-13 “N” Rates of Speed
Grey Road 4 Municipality of Grey Highlands By-Law 4788-13 Schedule “N” Rates of Speed
Location Map
Grey Road 13 Municipality of Grey Highlands By-Law 4788-13 Schedule “N” Rates of Speed
Location Map
Grey Road 18 Municipality of Meaford By-Law 4788-13 “N” Rates of Speed
Grey Road 29 Municipality of Meaford By-Law 4788-13 Schedule “N” Rates of Speed and Schedule
“P” Community Safety Zone Location Map
Grey Road 109 Township of Southgate By-Law 4788-13 Schedule “O” Rates of Speed in School
Zones for Restricted Times Location Map
Grey Road 1 Township of Georgian Bluffs By-Law 4788-13 Schedule “U” No Parking Where Signs
Posted Location Map
Grey Road 2 Town of Blue Mountains By-Law 4788-13 Schedule “U” No Parking Where Signs
Posted Location Map

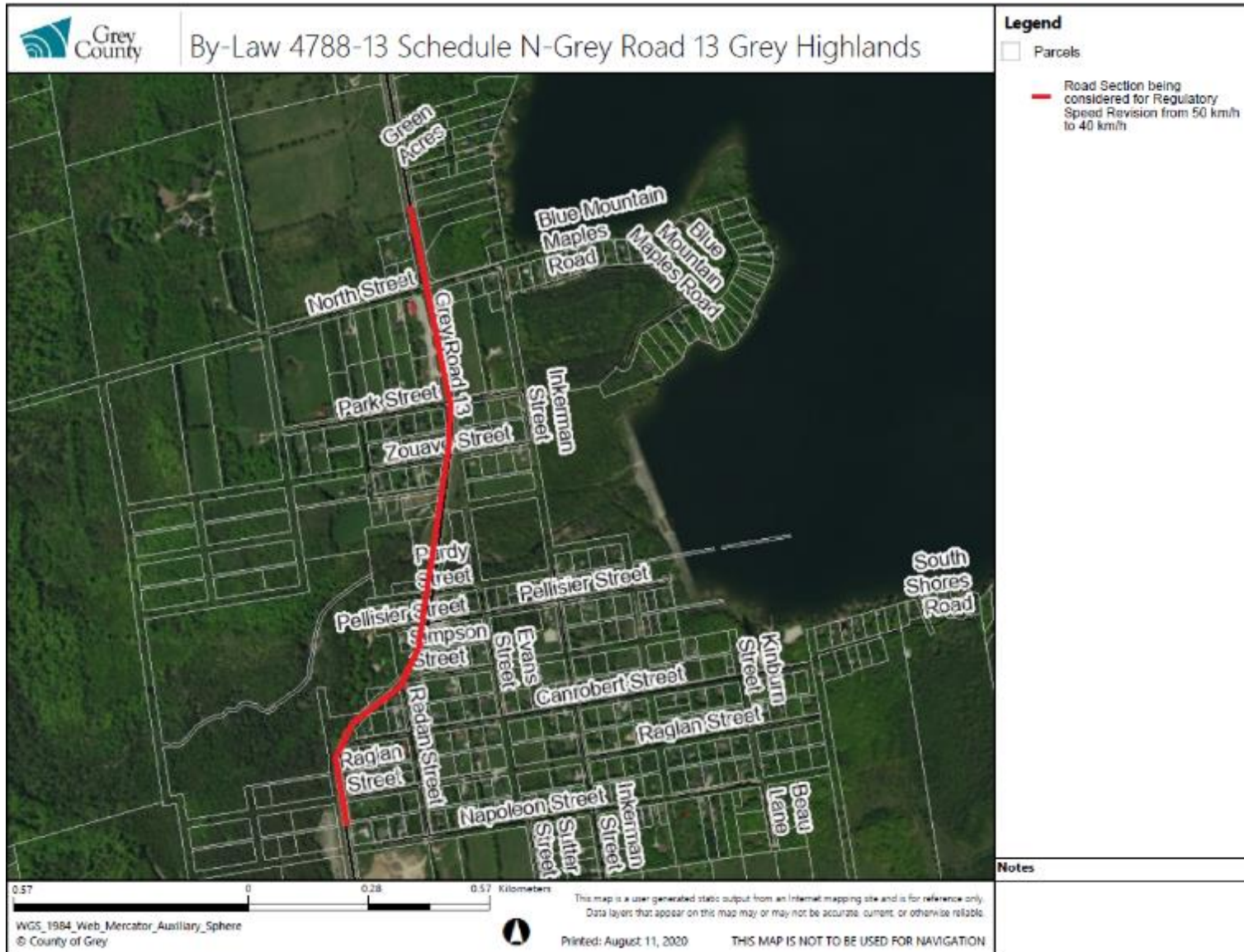
Grey Road 4 Municipality of West Grey By-Law 4788-13 Schedule "N" Rates of Speed Location Map



Grey Road 4 Municipality of Grey Highlands By-Law 4788-13 Schedule "N" Rates of Speed Location Map



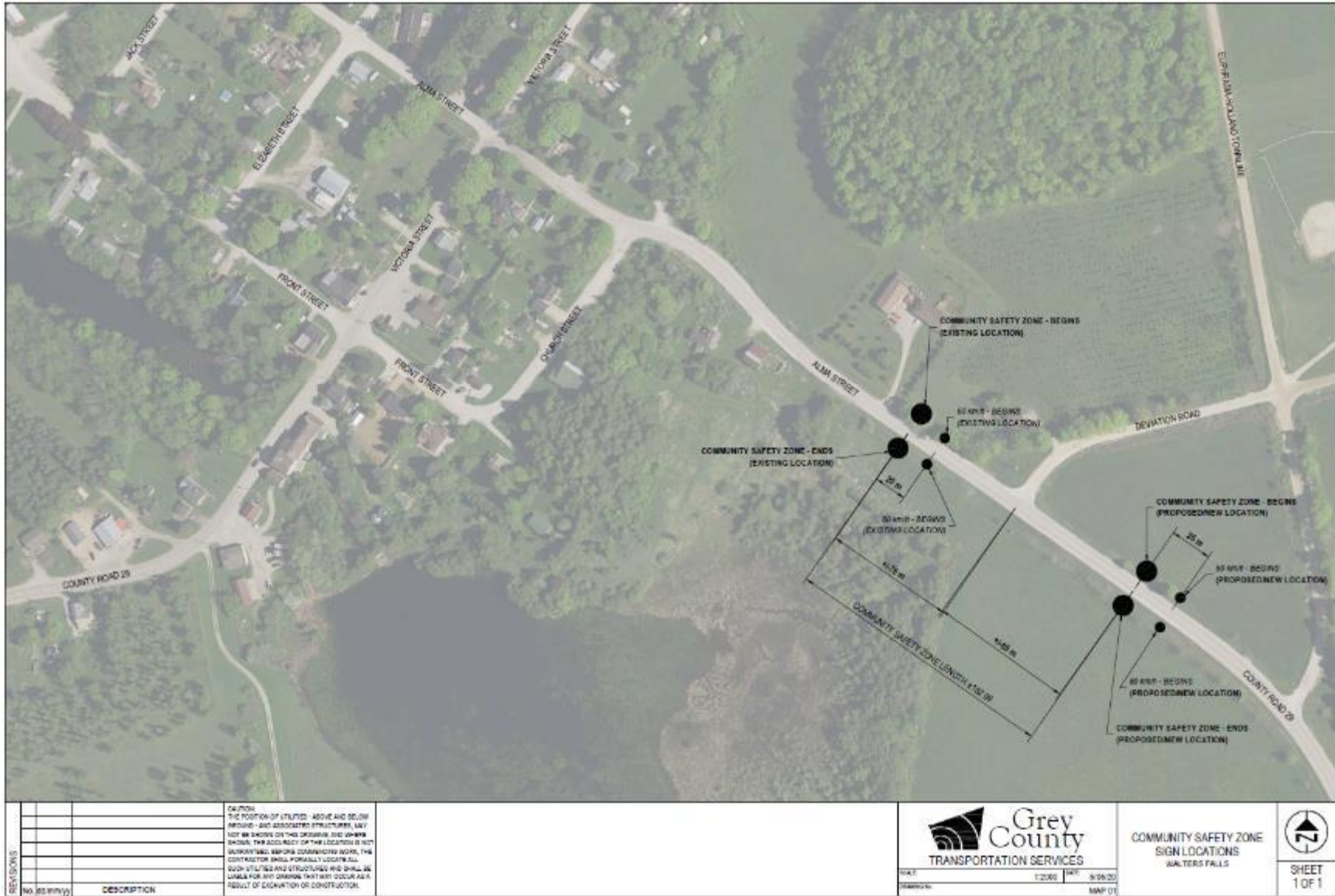
Grey Road 13 Municipality of Grey Highlands By-Law 4788-13 Schedule “N” Rates of Speed Location Map



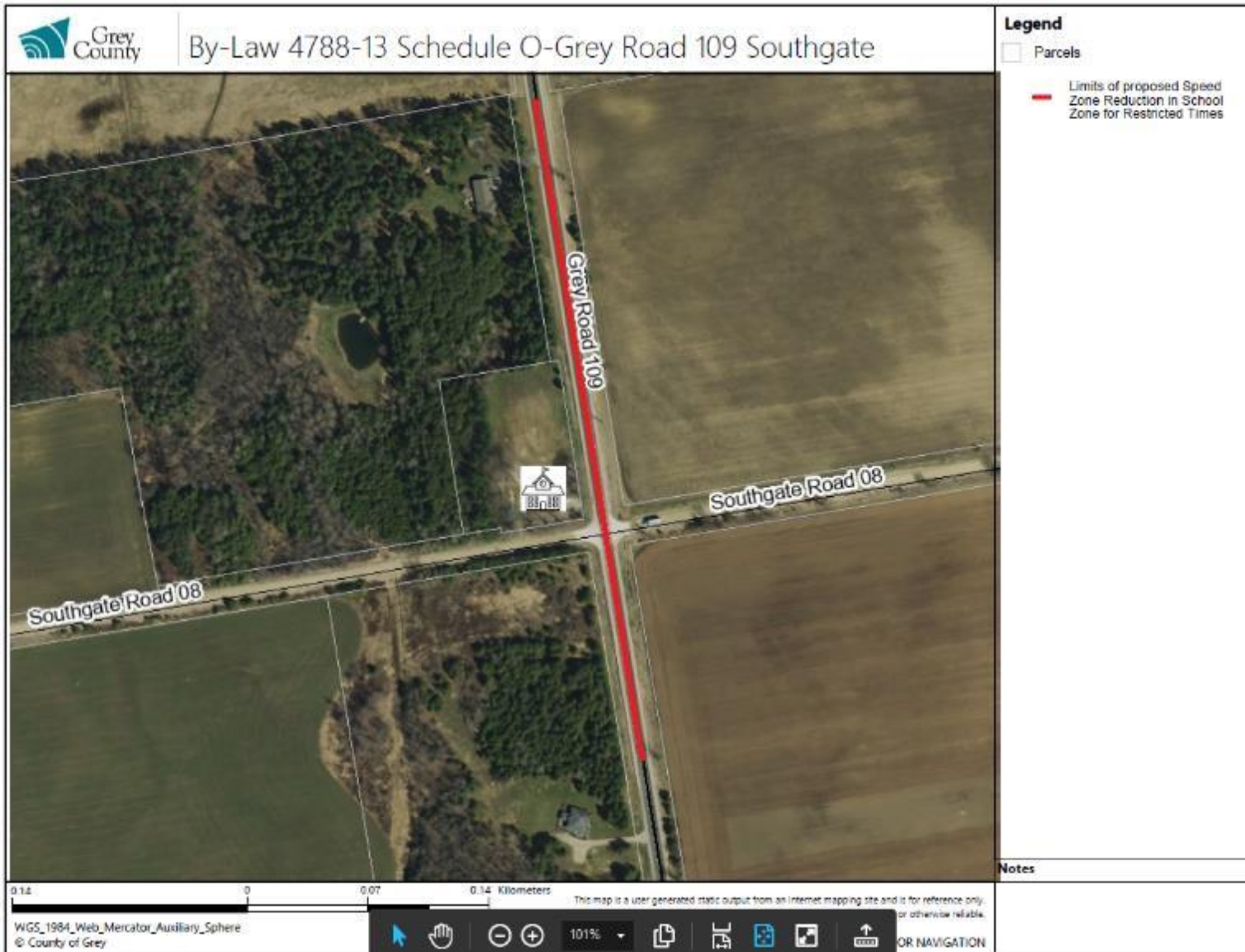
Grey Road 18 Municipality of Meaford By-Law 4788-13 Schedule "N" Rates of Speed Location Map



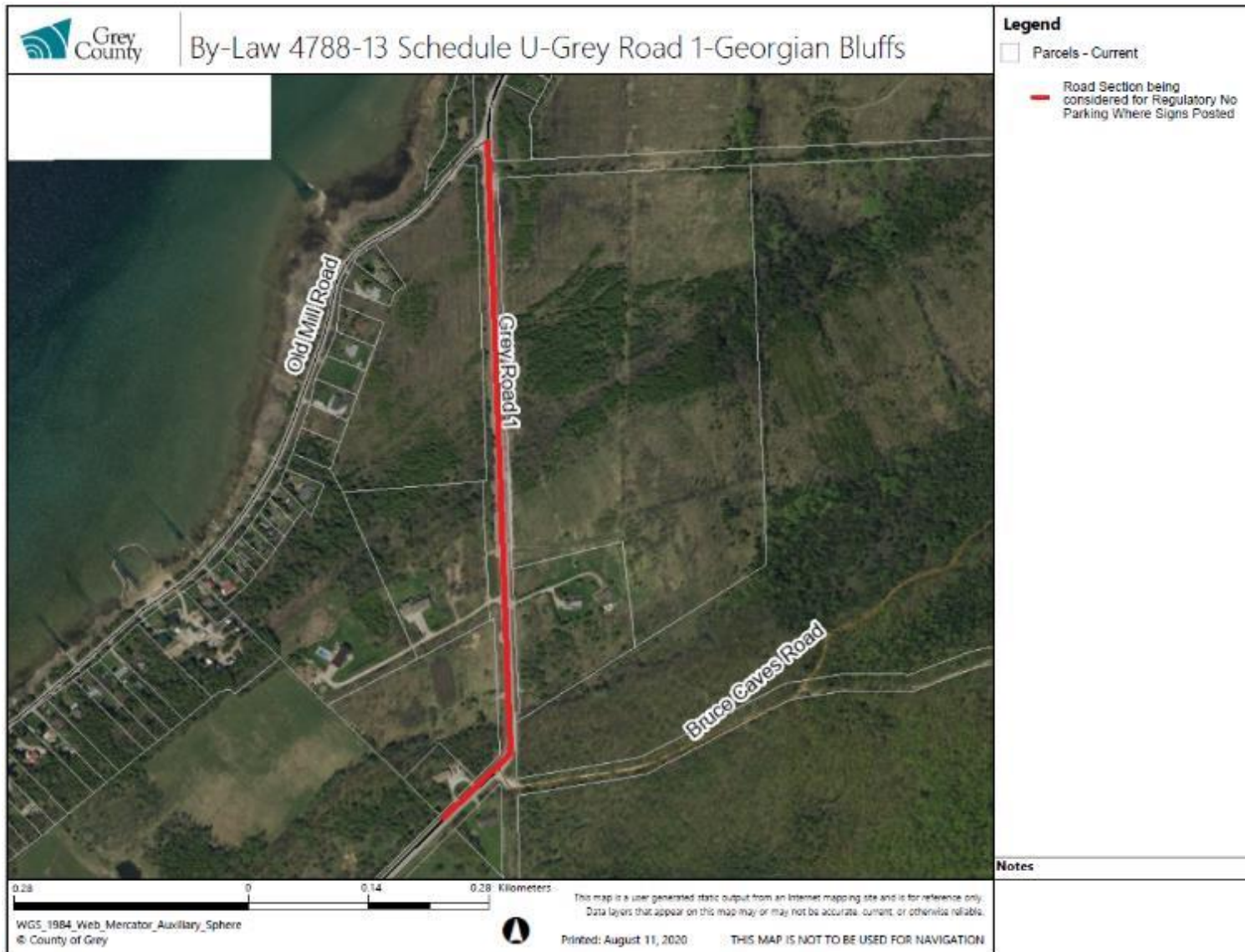
Grey Road 29 Municipality of Meaford By-Law 4788-13 Schedule "N" Rates of Speed and Schedule "P" Location Map



Grey Road 109 Township of Southgate By-Law 4788-13 Schedule "O" Rates of Speed in School Zones for Restricted Times Location Map



Grey Road 1 Township of Georgian Bluffs By-Law 4788-13 Schedule "U" No Parking Where Signs Posted Location Map



Grey Road 2 Town of Blue Mountains By-Law 4788-13 Schedule "U"
No Parking Where Signs Posted Location Map

